

- ◆ reliable
- ◆ easy handling
- ◆ maintenance free
- ◆ cost effective
- ◆ protecting the environment
- ◆ safest balancing system
- ◆ high performance swivel joint

5 at a time -
with unrestricted cross-over



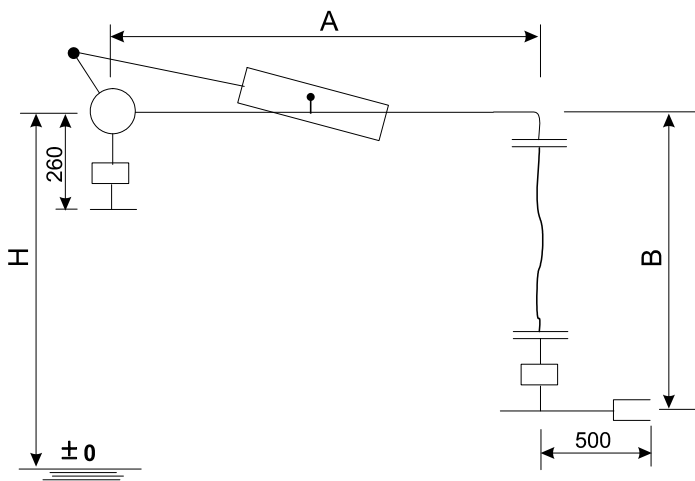


EMCO bottom loading achieves easy filling of tank trucks. Simultaneous loading of 5 different products is possible. No matter, where you want: Premium in the front, Unleaded in the middle and Diesel in the rear, EMCO bottom loading gives you total flexibility.

The special EMCO design allows an unrestricted cross over.

Every loading arm can be connected to every tank truck compartment. This saves time since the filling procedure is much shorter.

The main criteria of the loading arm are safe working, easy operation and maintenance. During filling there is adequate space between the loading arms and the tank truck. Giving free access for operation and escape way in case of emergency.



Loading Arm	A	B	H
001	1700	2320	3100
002	1900	2720	3500
003	1900	3120	3900
004	2100	3520	4300
005	2100	3920	4700

Size:	4"
Material:	carbon steel / ali
Seal:	Viton
Design pressure:	16 bar, without dry break coupler prod-
Design temperature:	-10 °C up to +80 °C
Spring cylinder balancing:	

For the API Dry Break Coupler you have different options:

- ◆ PEROLO CAMSEC Coupler (10 bar) with integrated check valve, if required
- ◆ J 0100 (16 bar), high pressure version; with integrated check valve, if required
- ◆ J 0500 (10 bar), safety interlock feature
- ◆ K2/K2P (16 bar), zero spillage by pumping mechanism

EMCO WHEATON
A Gardner Denver Company

World_bottom_e - 02/01 FMA/hsc

Whilst the content of this leaflet has been edited with the greatest care, we are not liable for any errors or omissions

EMCO WHEATON
GmbH

Emcostr. 2 – 4 D - 35274 Kirchhain, Germany
Tel.: +49 (0) 6422 84-0 ♦ Fax : +49 (0) 6422 5100
sales@emcowheaton.com ♦ www.emcowheaton.de