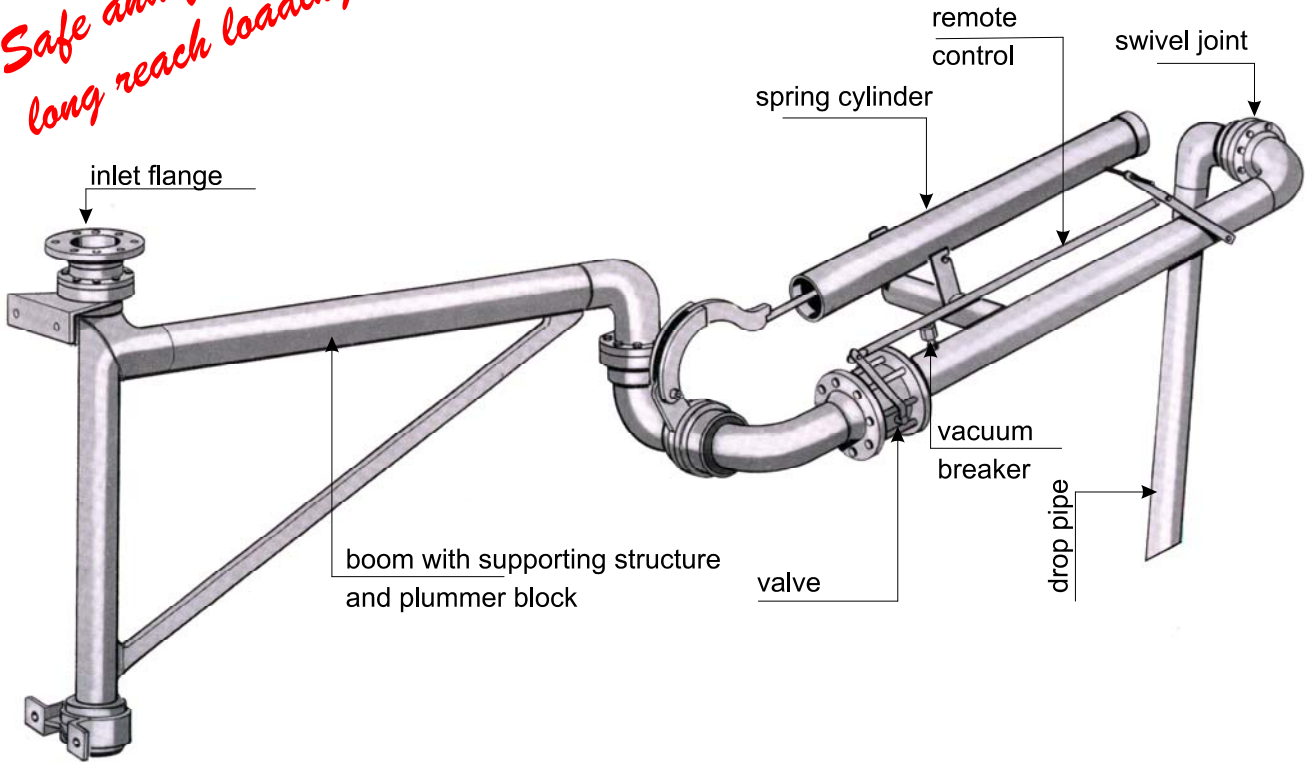


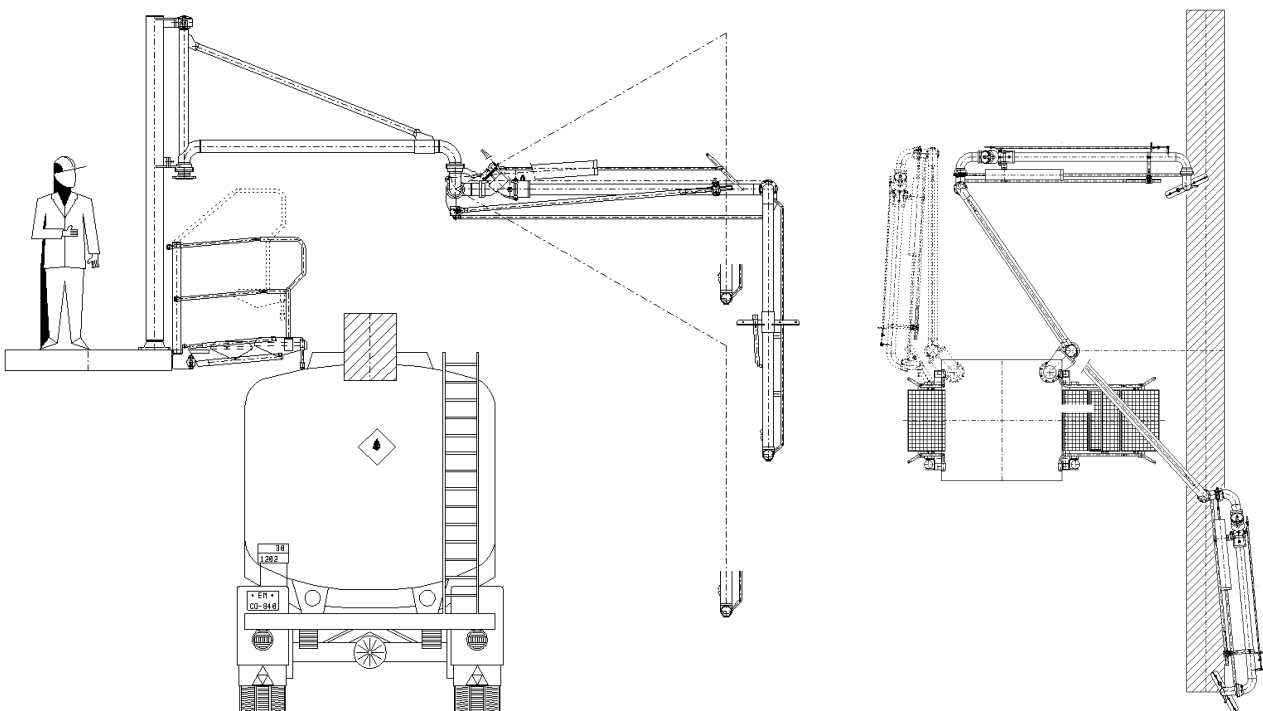
*Safe and flexible
long reach loading*

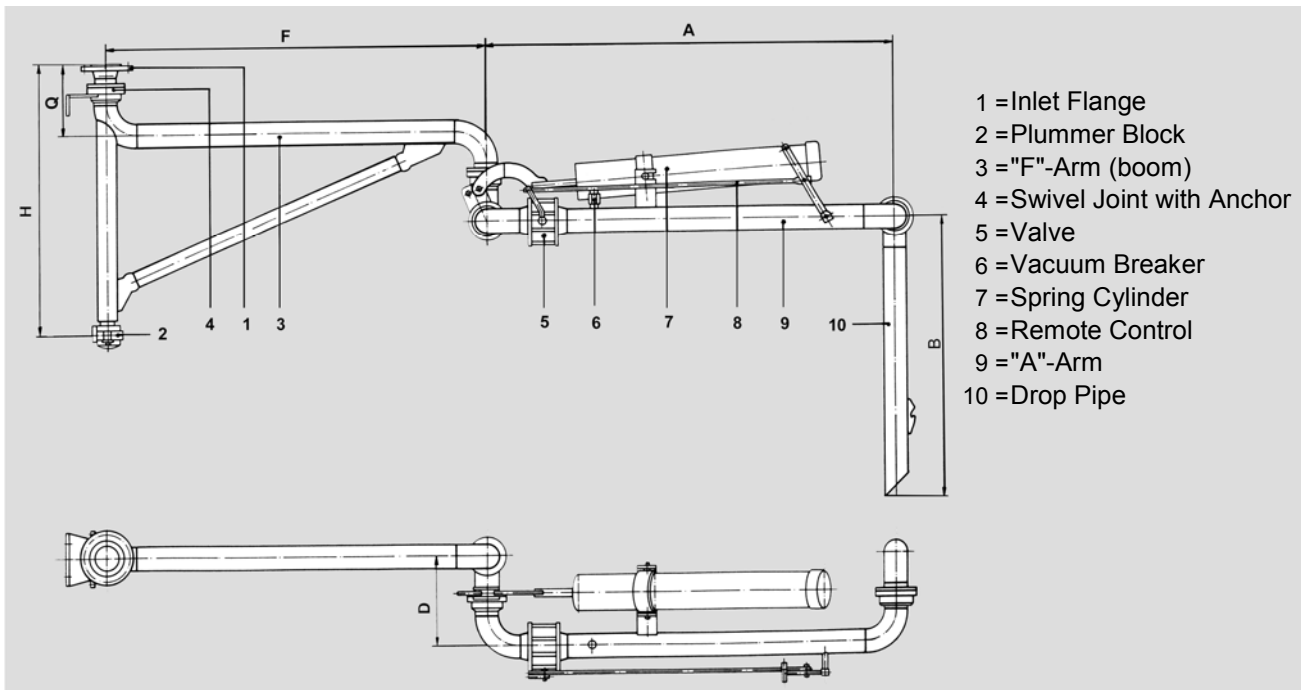


This type of loading arm is especially designed to load **chemical products**. It is suitable for the **top loading** of Road or Rail tankers **using the manhole**. The loading arm has a **long reach** and is suitable for applications where the manhole **cannot be accurately positioned**.

Because of the robust and high quality design of the swivel joints and the precise loading arm balancing handling of the loading arm is very convenient.

Envelope Drawing

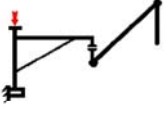
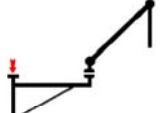
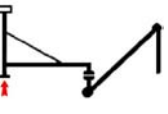
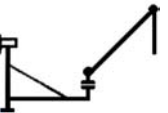




DIMENSIONS

DN	A*	B*	F*	H*	D	DIN PN 16	Q	ANSI 150 lbs
50	2000	1600	2000	1300	256	225		244
80	2800	1600	2000	1300	333	269		288
100	2800	1600	2000	1300	411	311		335

* Standard dimensions. Alternative dimensions available on request.

Type	Size DN	Balancing Method	Material of product carrying components
	E0808	Spring Cylinder	carbon steel or stainless steel (low temperature steel is possible) Seals: Buna, Viton oder PTFE Design pressure: max. 40 bar up to shut off valve Design temperature: -50 °C to max. 300 °C
	E0611	Counter-weight	
	E0809	Spring Cylinder	
	E0612	Counter-weight	
	E0810	Spring Cylinder	
	E0613	Counter-weight	
	E0811	Spring Cylinder	
	E0614	Counter-weight	
DN 150 on request			
Accessories:	<ul style="list-style-type: none"> ♦ holding device for filling position ♦ parallel bar 		

EMCO WHEATON
A Gardner Denver Company

E0808-E0811/E0611-E0614_e - FTH/hsc

Whilst the content of this leaflet has been edited with the greatest care, we are not liable for any errors or omissions

EMCO WHEATON
GmbH

Emcostr. 2 – 4 D - 35274 Kirchhain, Germany
Tel.: +49 (0) 6422 84- 0 ♦ Fax : +49 (0) 6422 5100
sales@emcowheaton.dcom ♦ www.emcowheaton.de