



The B0030 Marine Loading Arm is preferred when loading/unloading sea-going tanker ships and its capability has been proven within many years of trouble free operation world-wide.

The B0030 with its self supporting design includes a rigid link pantograph balancing system with independent counterweights direct linked to the inboard- and outboard arm. Thus providing that accurate balance is definitely ensured throughout all manoeuvring and connecting positions. The self supporting design provides not only high safety standards for easy operation but also lowest possible jetty loads, which minimises the cost for the jetty itself.

The B0030 is available:

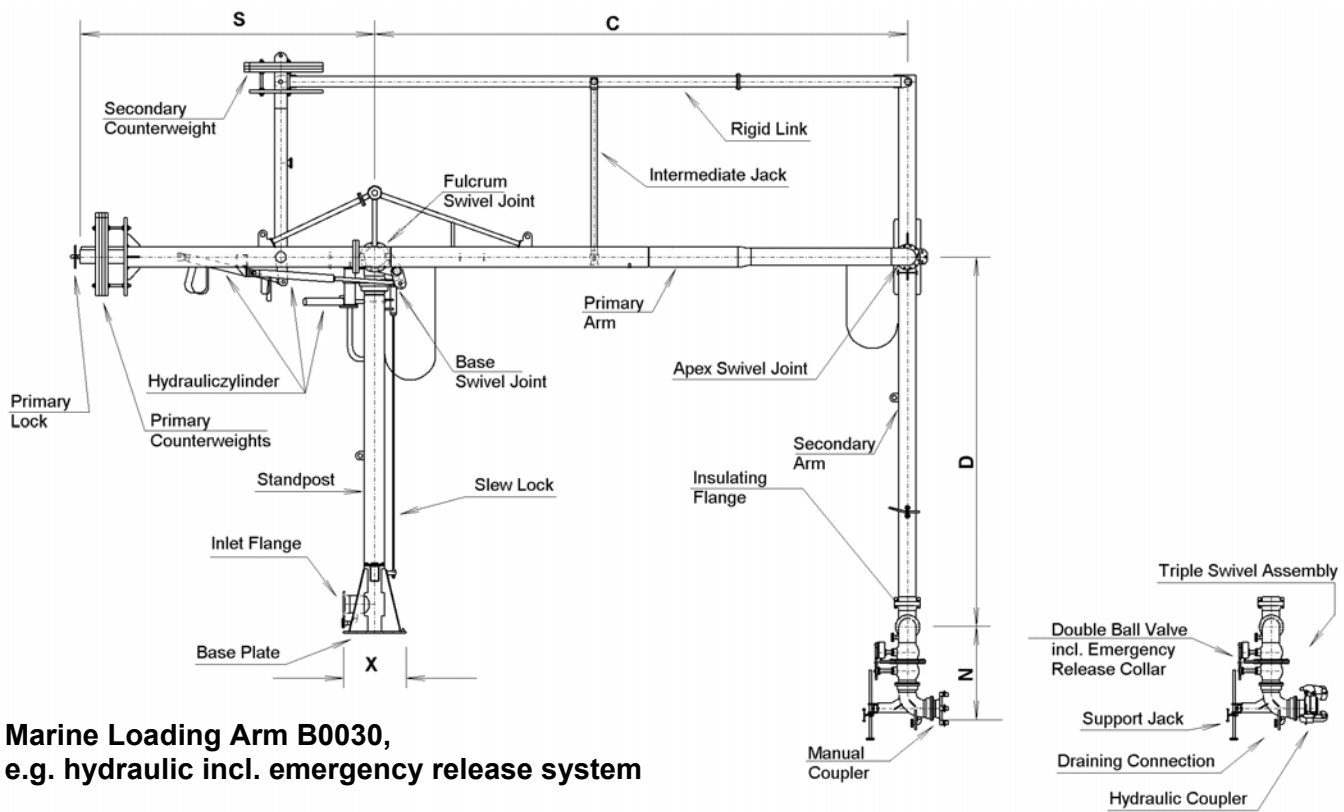
- ◆ in sizes from 4" up to 16"
- ◆ for pressure rates from PN 10 up to PN 40
- ◆ materials: carbon steel, low temperature steel, stainless steel
- ◆ for all products
- ◆ for temperature range of -50 °C up to +200 °C

For any deviations we shall be glad to offer you individual solutions.

The advantages in comparison with hose loading facilities are ease of handling, higher availability/ flexibility, less man power and minimum maintenance required by maximum operational safety and minimised operational cost (cost of ownership).

The B0030 can be manually or hydraulically operated.

Additional equipment is available.



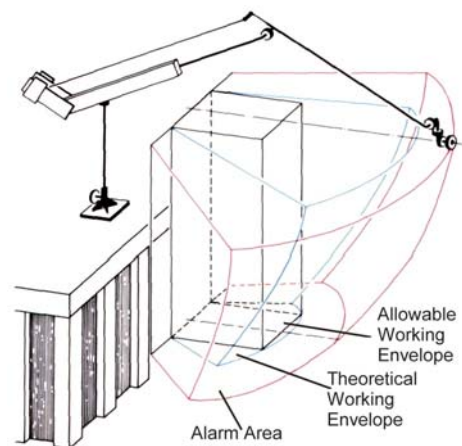
**Marine Loading Arm B0030,
e.g. hydraulic incl. emergency release system**

TYPICAL DIMENSIONS, WEIGHTS AND BENDING MOMENTS (without emergency release system)

Size inch	Stand Post Height mm	X mm	C mm	D mm	N mm	S mm	flow rate m ³ /h	weight KN	bending moment KNm
4"	4 500	1 000	8 000	8 000	590	3 900	300	62	103
6"	4 500	1 000	8 000	8 000	590	3 900	600	63	105
8"	4 500	1 000	9 000	9 000	740	3 900	1 100	87	144
10"	6 000	1 500	10 000	10 000	890	5 250	1 700	119	230
12"	7 000	1 500	11 000	11 000	1 040	6 250	2 500	157	340
16"	7 000	1 500	11 000	11 000	1 310	6 250	4 000	224	500

Design:

- ◆ Fully balanced via rigid link pantograph system incl. separated counterweights for inboard- and outboard arm
- ◆ self supporting system, providing lowest weight and bending moment for easy handling
- ◆ most convenient light weight design available world-wide
- ◆ for transfer of all products, e.g. mineral oil, chemicals, liquefied gases
- ◆ available in carbon steel, low temperature steel and stainless steel
- ◆ swivel joints either as welded-in or flanged version
- ◆ seals available in Buna-N, Viton, PTFE or any other specific material depending on application
- ◆ pressure rates of PN 10 to PN 40 or any other international standards. Higher pressure rates are possible
- ◆ temperature range from -50 °C (e.g. LPG) to +200 °C (e.g. Bitumen). Other temperature criteria are possible.



Typical Accessories:	Envelope Warning System	Emergency Release System (ERS)
Vacuum Breaker	Purge Line	Insulating Flange
Nitrogen Purge Line	Manual Quick Coupler	Hydr. Operation
Drainage Connections	Hydr. Quick Coupler	Vapour Return Line