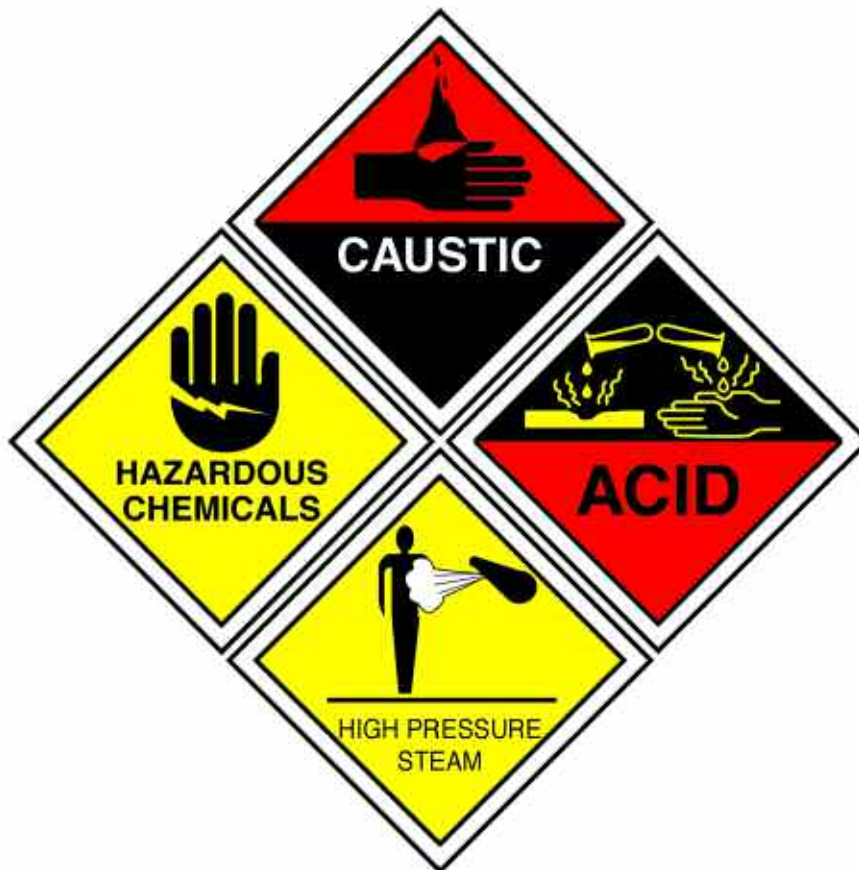


Safety in Hazardous Processing

Safety Systems for Chemical Leaks



SAFETY FIRST

SPRAY SHIELDS

for flanges, valves and expansion joints

Applicazioni Tecniche
Safety for Chemical Leaks

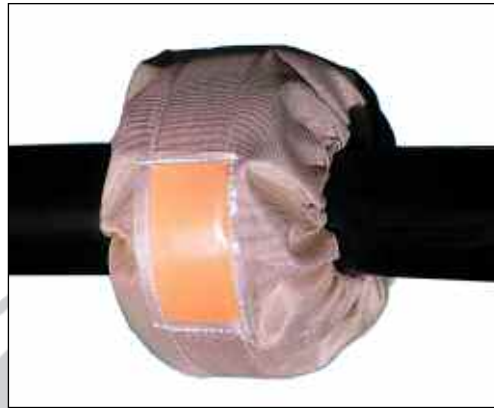


SAFETY SPRAY SHIELDS FOR FLANGES

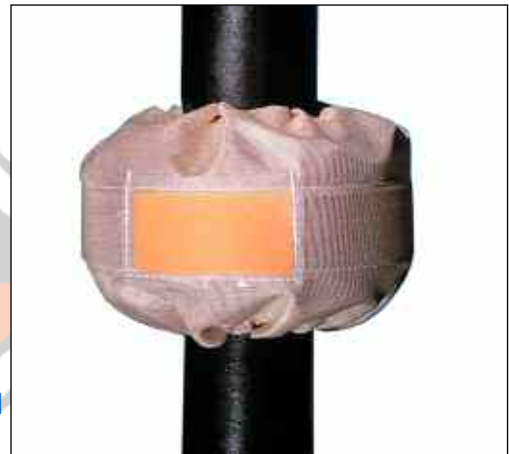
Our plastic cloth safety shields are manufactured from single and multilayered clear cloth for easy visibility or a colored cloth with a leak indicating patch. Weep holes located behind the sensitive pH indicating patch allow the indicator to immediately signal a leak and change color to red in the presence of an acid or green if an alkali. The pH patch is also replaceable which allows reuse of the shield. Our safety shields are UV stabilized and resistant to sun, rain and fumes and may be used indoors or outdoors.

Our cloths shields are quickly and easily installed by one person without any tools by means of a hook and loop fastener and drawstrings.

- Cloth safety shields available in six different materials and eight various styles.
- Can be customized for any and all special requirements or applications.
- Available for all ANSI, DIN and PN flange sizes.



Teflon® Premium Spray Shield



Teflon® Spray Shield



Pure Teflon® Spray Shield

Teflon®

- Teflon® coated glass cloth.
- Teflon® or Nomex thread and drawstring.
- Maximum operating temperature 235° C.
- Fire and tear resistant.
- Four styles available in premium standard, single-ply, and clear Teflon®.
- Standard color is brown.
- Broad spectrum of chemical resistance.

Premium

- High Teflon® content for severe applications.
- Outlasts all other brands on market.
- 3-ply multi-layered construction.
- Laboratory test proven.

Standard

- An alternative to Premium shields.
- 3-ply multilayered reinforced construction.
- 3-ply multi-layered construction.

Clear Teflon®

- Similar in design to standard Teflon® shields.
- 100% clear Teflon® strip in center of shields allows for visual inspection

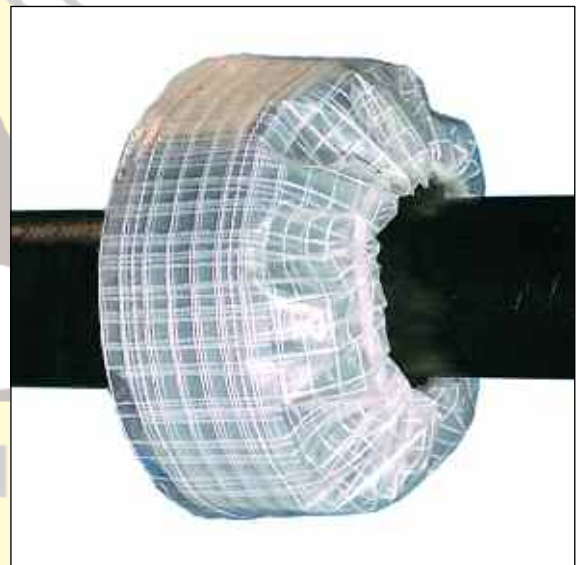
Single Ply

- Similar in design to standard Teflon® shield.
- Single-layered, economical construction for less severe applications.

SAFETY SPRAY SHIELDS FOR FLANGES



Polypropylene Spray Shield



Polyethylene Spray Shield



Polyvinyl Chloride (PVC) Spray Shield



NEW

Clear PVC Spray Shield



100% PTFE Drain



ADDITIONAL CLOTH

Polypropylene

- 100% black polypropylene cloth, thread, and drawstring.
- Polypropylene stiffener lines the interior for added protection.
- Maximum operating temperature 93°C.

Polyvinyl Chloride (PVC)

- Manufactured from yellow, reinforced polyvinyl chloride (other colors available)
- Reinforced thread and drawstring.
- Maximum operating temperature 80°C.
- Available also with a NEW CLEAR PVC window in center.

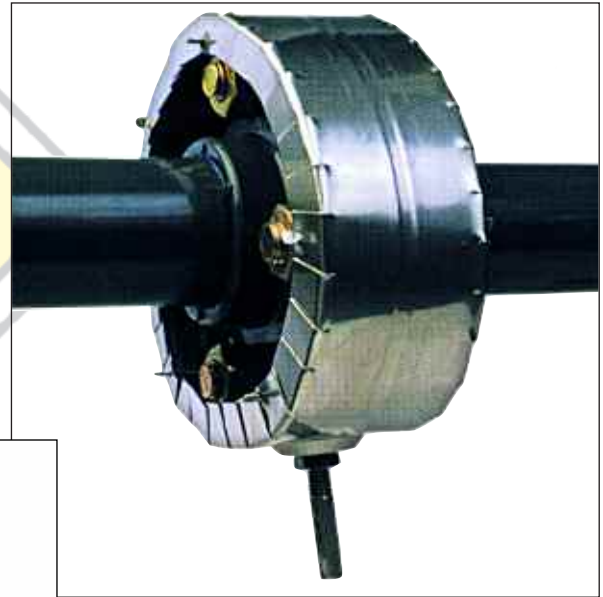
Polyethylene

- Manufactured from transparent, reinforced polyethylene.
- Reinforced thread and drawstring.
- Maximum operating temperature 80°C.

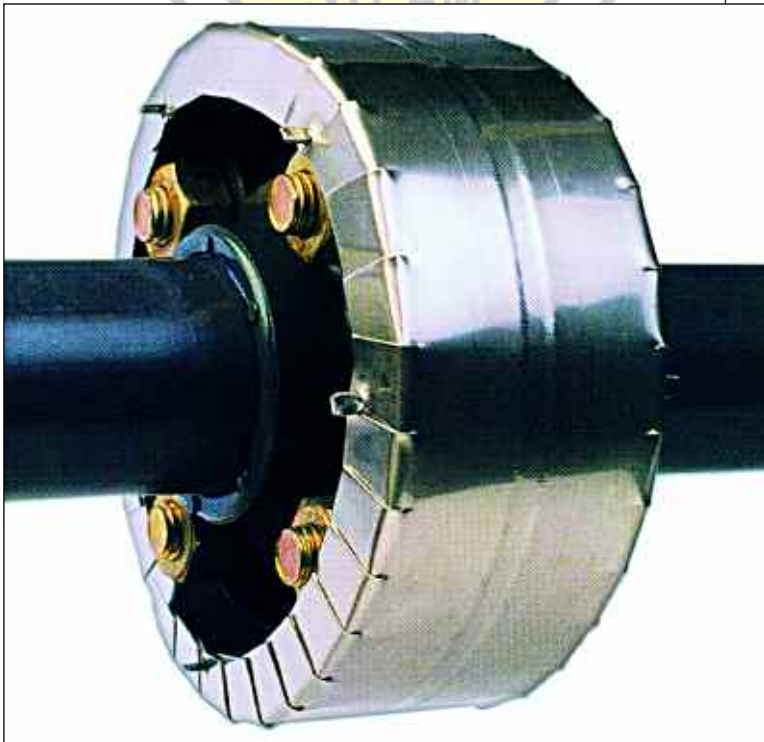
Optional Drain Feature

- Available on clear Teflon® shield.
- 100% Teflon drain nipple attached to bottom of shield.
- Used for secondary containment, venting, and emissions testing.

SAFETY SPRAY SHIELDS FOR FLANGES



Stainless Steel Spray Shield with drain



Stainless Steel Spray Shield



Metal

- Used in high temperature, high pressure or when conditions are unfavorable for cloth shields.
- Manufactured from 0,75 or 0,60 mm sheet metal.
- Slotted overlapped edges prevent lateral spray-outs.
- Spacer rods raise shield off flange to dissipate pressure.
- Stainless steel screws and keyway slot make installation simple.
- Stainless steel hose clamp connections OPTIONAL
- Easily installed by one person with a screwdriver.

- Available with anti-mist screen to help eliminate aerosol effect.
- Available for all standard flange sizes.
- Customized sizes also available.

Stainless Steel

- Recommended for corrosive and hazardous environments.
- Available in 304 and 316 grade stainless.
- Maximum operating temperature 1,100°C.
- Maximum operating pressure 240 bar.

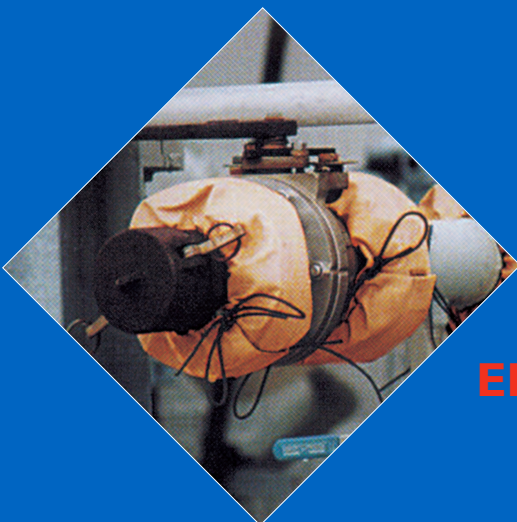
Galvanized Steel

- Recommended for oil, water and steam applications only.
- Maximum operating temperature 400°C.
- Maximum operating pressure 240 bar.

Optional Drain Feature

- Available in 304 and 316 stainless steel.
- Stainless steel nipple attached to bottom of shield.
- Used for secondary containment, ventings and emissions testing.

SAFETY SPRAY SHIELDS MAIN APPLICATIONS

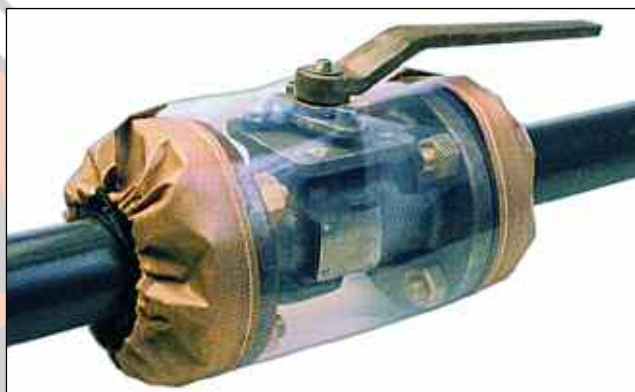


**SAFETY FOR
PERSONNEL,
EQUIPMENT
AND THE
ENVIRONMENT**

**Examples of Industries That Use
Spray Shields**

- Aerospace
- Mining
- Automotive
- Petrochemical
- Chemical
- Pharmaceutical
- Cosmetics & Perfume
- Nuclear Power
- Electronics & Semiconductor
- Conventional Pulp & Paper
- Food & Beverage Processing
- Refineries
- Manufacturers of Household Cleaners/Detergents
- Steel Industry
- Sewage & Waste Water Treatment
- Manufactures of Insecticides/Herbicides
- Military Ships
- Commercial Ships

SAFETY SPRAY SHIELDS FOR EXPANSION JOINTS & VALVES



Clear Teflon® Ball Valve Shield

Globe Valve Bonnet Shield



Clear Teflon® Expansion Joint Shield

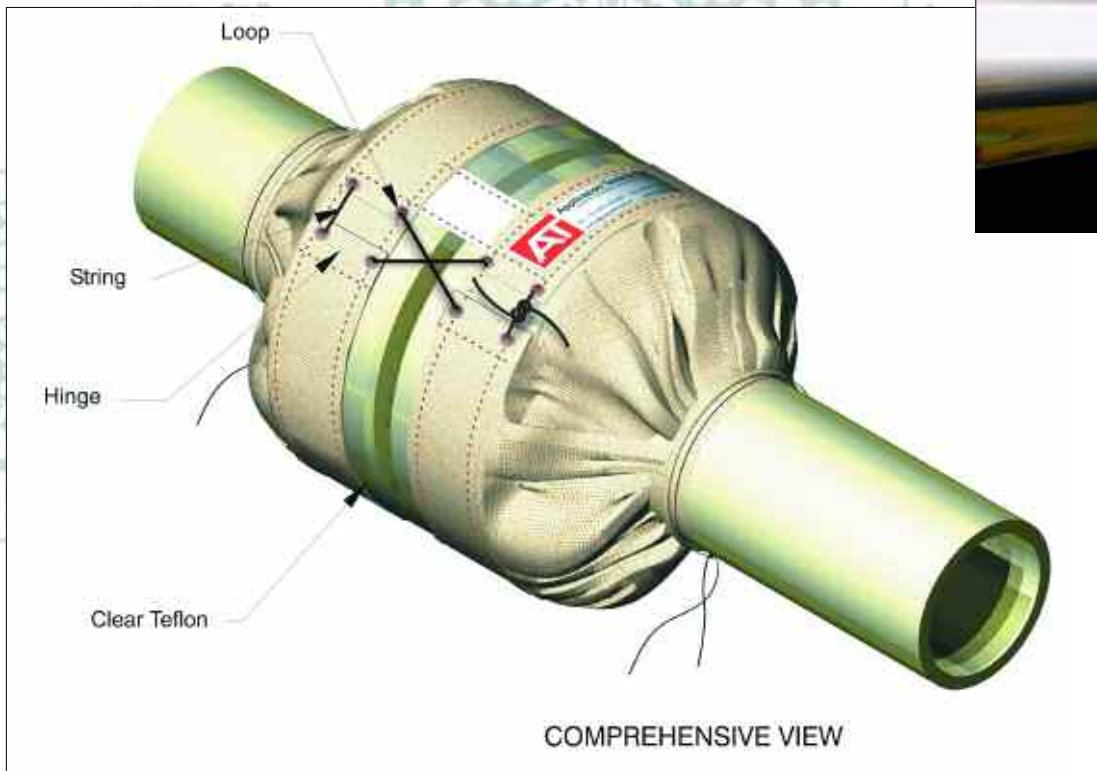
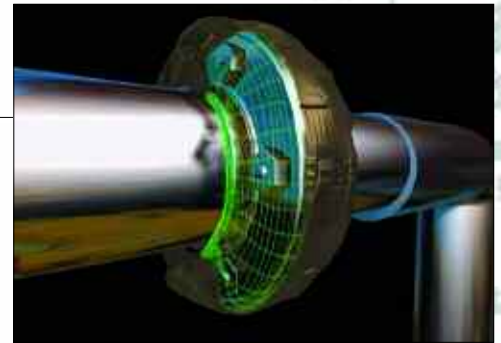
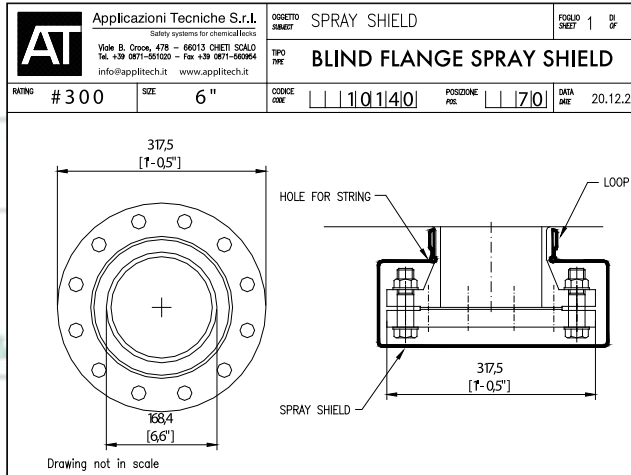


Expansion Joint Shields

- Available in same cloth and metal materials as other shields.
- Same quality design as other cloth shields.
- Attached by velcro fasteners and drawstrings.
- Allows for movement of the expansion point without any change in effectiveness.
- Available for all brands and styles of expansion joints.

Valve Shields

- Available in same cloth and metal materials as other shields.
- Manufactured to fit all types of valves:
 - *Butterfly*
 - *Globe*
 - *Check*
 - *Diaphragm*
 - *Gate*
 - *Ball*
 - *Plug*
 - *Control*



Pipe Vent Covers

- Designed to cover the pipe vent outlet on safety relief valves and rupture discs.
- Manufactured from heavy duty polyvinyl chloride (PVC) or Teflon®.
- Weatherproof: prevents rainwater and snow from entering.
- Keeps out birds and insects.
- UV stabilized and chemical resistant.
- Simple and easy to install.
- Contains a drawstring for securing.
- Contains a grommet with rope attached to prevent loss.
- Available for all pipe sizes.
- Available in angle or straight cut.

Hose Shields

- Manufactured from Teflon® and polyvinyl chloride.
- pH indicating patch signals leaks.
- Available for any size and length.
- Attached by velcro fasteners and drawstrings - wraparound design or drawstrings only - tube design.

Transfer Line Sleeves

- Quickly fits over the locking mechanism.
- Have rapid connect and release tie locks.
- Are reusable and UV resistant.
- Are made of rugged Teflon® impregnated glass cloth with Teflon® drawstrings suitable for

- maximum operating temperature of 235° C.
- Are economical.

Other Specialty Shields

Custom designed for:

- Sight Glasses
- Flow indicators
- Pressure Vessels
- Pumps
- Fittings
- Instruments
- Manways

THE SUPPLY ALSO INCLUDES
AN ON-SITE ANALYSIS CARRIED OUT
BY OUR TECHNICIANS
AND PREPARATION OF DRAWINGS
FOR EXTRA STANDARD SIZES



Applicazioni Tecniche
Safety for Chemical Leaks



v.le B. Croce, 478 - 66013 CHIETI - ITALY
Ph. +39 0871 55 10 20 - fax +39 0871 56 09 54
info@applitech.it - www.applitech.it



Distributed by: