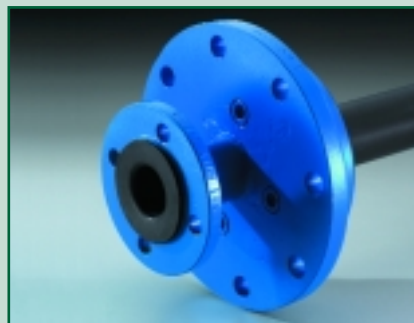
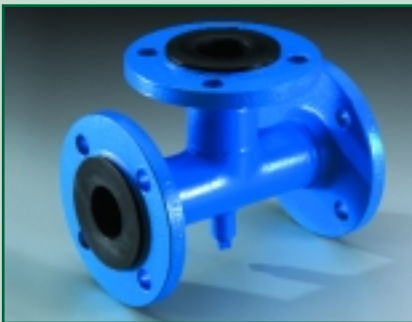
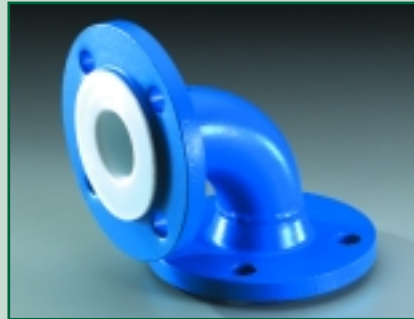


BAUM KUNSTSTOFFE GMBH

Chemical resistant piping systems lined with PTFE-PFA-PP



➔ Lined pipes, elbows, tees, instrument-tees, reducers, crosses and spacers in the dimensions DN15 to DN 500 and 1/2" to 20", according DIN 2848/2874 and ANSI B16.5 in carbon steel and stainless steel lined with PTFE, PFA (virgin, antistatic, FDA conformity upon request) and PP-lining.

➔ PTFE nozzle-liner and PTFE-lined steel dip pipes.

➔ Expansion joints in PTFE as well as stainless steel expansion joints with PTFE-lining.

➔ We also manufacture special forms and dimensions according to your requirements.

Pressure Equipment Directive
(PED 97/23/EC):

All piping parts fulfil the requirements of the PED and will be delivered with CE marking.

We are certified
acc. DIN EN ISO
9001:2000.



BAUM KUNSTSTOFFE GMBH

Gewerbestraße 25-29 · D-75217 Birkenfeld-Gräfenhausen
Phone +49 (0) 70 82-94 36-0 · Fax +49 (0) 70 82-94 36-40
E-Mail: info@baumkunststoffe.com · www.baumkunststoffe.com

