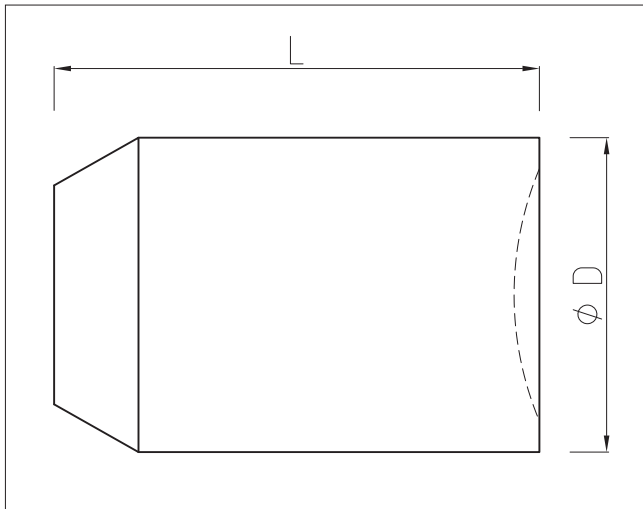




### Foam Pig type FP

The soft foam pig is mostly used for frequent wiping or for airdrying after hydrostatic testing. The soft foam pig has excellent water-absorption properties and is provided with a strong polyurethane back-seal in natural color. The soft foam pig will traverse diameter reductions upto 50%.



Standard dimensions in mm, Standard deviation +/- 2%.  
Special dimensions and executions available upon request.  
Density: 25 kg/m<sup>3</sup> (2 lbs/cft)  
Maximum diameter reduction: 50%

Size	D x L	Weight (kg)
2"	75x150	0.02
2.1/2"	90x200	0.03
3"	100x220	0.04
4"	130x250	0.08
5"	150x275	0.12
6"	190x300	0.21
7"	200x320	0.25
8"	230x360	0.37
10"	290x430	0.71
12"	350x560	1.10
14"	400x600	1.90
16"	450x700	2.80
18"	520x750	4.00
20"	570x800	5.00
22"	620x850	6.50
24"	670x900	8.00
26"	730x1100	11.50
28"	770x1100	13.00
30"	840x1150	15.00
32"	880x1250	19.00
34"	930x1300	22.00
36"	980x1350	25.50
38"	1030x1400	29.00
40"	1080x1540	35.00
42"	1120x1680	41.00
44"	1190x1680	47.00
46"	1240x1680	51.00
48"	1300x1800	60.00
56"	1500x2240	99.00
60"	1600x2400	129.00
64"	1700x2520	145.00
76"	2060x2820	172.00
80"	2130x3000	181.00