

Features and Benefits

The J0550 self sealing Vapour Coupler is specifically designed to allow high transfer rates of vapour to flow freely from the tank truck back to the loading rack. The J0550 has the lowest pressure drop in its class. It will allow higher flow rates at reduced pressure drop when incorporated in to a well engineered vapour return system, preferably as an integral part of a vapour unloading arm.

The J0550 has a spring-closed poppet. Coupling to a tank truck vapour adaptor with a poppet will open both coupler and adaptor. Remove the coupler and both will close.

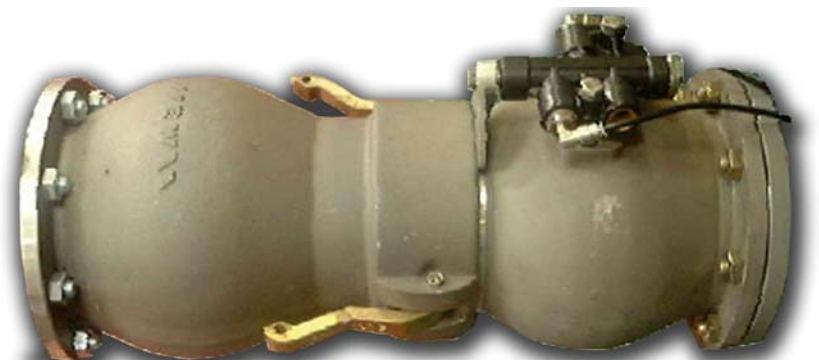
Ideal for use in a well engineered vapour system where multi-compartment bottom loading is taking place.

- Self sealing valve
- Spring close poppet
- Low Pressure Drop
- Highest flow
- 4" TTMA fanged Inlet
- 4" Female cam and groove outlet
- Mates to all available vapour adaptors made in accordance with the API RP1004.
- Aluminium body
- Viton Seals
- Hard wearing brass cams
- Product drain plug



Flange Details:

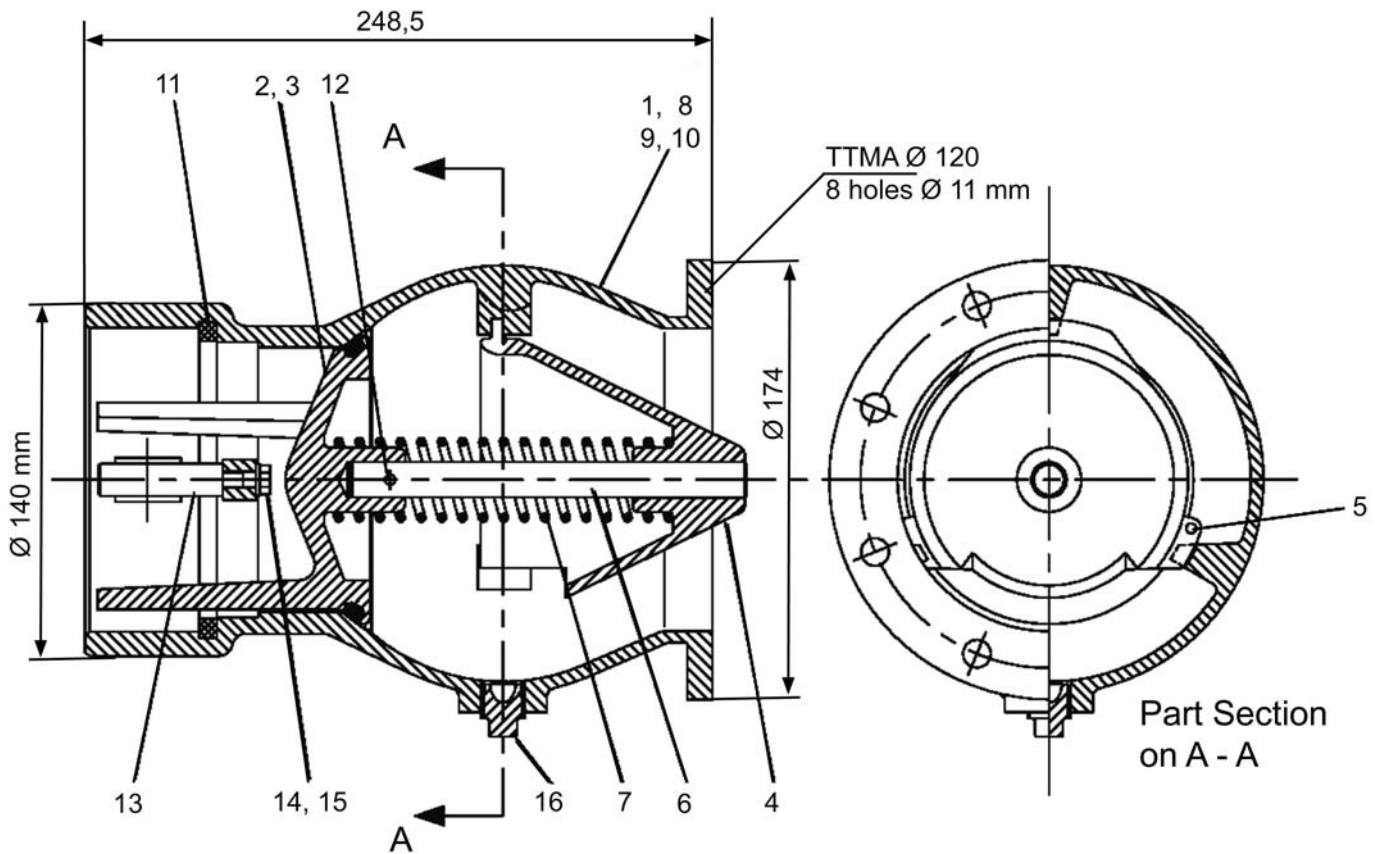
Outside Diameter: 174.0 mm
Inside Diameter: 120.0 mm
Bolt Hole PCD: 149.2 mm
No. of Bolt Holes: 8
Bolt Hole Diameter: 11.0 mm
Holes straddle centreline



J0550 Coupler connected to F0530 tank truck Vapour Adaptor

Overall Length of Coupling: 248.5 mm

Weight: 3.6 kgs



Item	Part No.	Qty	Description
1	615903	1	body
2	619451	1	poppet
* 3	604460	1	O-ring
4	619308	1	deflector cone
* 5	560489	2	spring clip
6	619452	1	stem
7	616233	1	spring
8	616232	2	cam arm
9	2566531	2	cam arm pin
10	0317943	2	split ring
* 11	615909	1	Seal
12	619343	1	roll pin
13	615907	1	rod
14	308976	1	bolt M 6 x 25 LG
15	415028	1	spring washer
16	0371110	1	plug 3/8" API
* 17	603672	1	gasket
*	615985		seal kit

To remove valve internals

1. Clamp coupler securely.
2. Remove spring clips (5).
3. Firmly hold cone (4) against spring (7) and rotate it so that locating lugs clear retaining slots.
4. Carefully allow cone to lift under spring pressure.
5. Tilt cone to allow lugs to pass through opening and lift clear.
6. Remove internals.
7. To refit reverse above procedure.

IMPORTANT

Care must be taken when removing cone which is under internal spring pressure.

EMCO WHEATON
A Gardner Denver Company

J0550_e - FTH/hsc

Whilst the content of this leaflet has been edited with the greatest care, we are not liable for any errors or omissions

EMCO WHEATON
GmbH

Emcostr. 2 – 4 D - 35274 Kirchhain, Germany
Tel.: +49 (0) 6422 84- 0 ♦ Fax : +49 (0) 6422 5100
sales@emcowheaton.com ♦ www.emcowheaton.de