



Cast Stainless Steel Valves

NEWCO gate, globe, and check valves

Cast Stainless Steel Valves

Cameron offers NEWCO* gate, globe, and check valves in sizes ¼ to 24 in [5 to 600 mm], ASME Classes 150 to 1500, in various grades of stainless steel. These valves are constructed to meet and exceed industry standards.

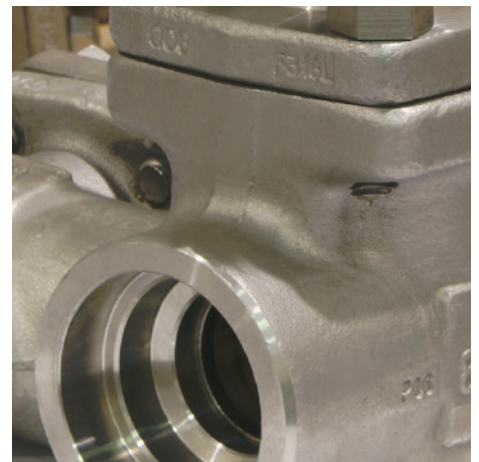
Advantages

- Material test reports
- ISO certification
- Traceability
- Fugitive-emissions testing
- API Spec 598 testing
- Major end-user approval
- Extensive engineering capabilities
- Quality customer service
- Warranty
- In-house automation capabilities

Cast stainless steel gate valves

- ¼ to 24 in [5 to 600 mm]
- Classes 150 to 1500

Cast stainless steel body and bonnet, rising stem, outside stem and yoke (OS&Y), ½- to 3-in solid wedge, 4-in and larger flexible wedge, integral seat rings, and stem backseat design





Cast stainless steel check valves

- ¼ to 14 in [5 to 350 mm]
- Classes 150 to 1500

Cast stainless steel body and cap, swing-type disc, integral seat ring, and bolted cap



Cast stainless steel globe valves

- ¼ to 12 in [5 to 300 mm]
- Classes 150 to 1500

Cast stainless steel body and bonnet, OS&Y, rising and nonrising handwheel, taper-type disc, integral seat ring, removable stem nut, and gland stem back seat design



Cast stainless steel gate, globe, and check valves for special applications

- ¼ to 24 in [5 to 600 mm]
- Classes 150 to 1500

Valves available with special trims, gear operators, electrical or pneumatic actuation, bypass configurations, cavity overpressurization options, and cryogenic applications with extended bonnets upon request

Cast Stainless Steel Valves



cameron.slb.com/newco

*Mark of Schlumberger
Other company, product, and service names
are the properties of their respective owners.
Copyright © 2018 Schlumberger. All rights reserved. 18-VL-380084

