

A D B L U E T A N K D I S P E N S E R

serie AT28007/EA with Level indicator



TABLE OF CONTENTS

INTRODUCTION	3
DESCRIZIONE	4
SAFETY PRESCRIPTIONS	4
TECHNICAL CHARACTERISTICS	5
CODES	5
VIEWS	6
DIMENSIONS	7
FOUNDATION PLANTS	9
INSTALLATION	10
OPERATION	12
5 DIGITS LEVEL INDICATOR AND COUNTER ATCH14 SERIES AT02314	13
ELECTRICAL DIAGRAM (WITH GLOBAL STAR)	18
ACCESSORIES	19
SPARE PARTS	19
LIST OF DELIVERY AND STORAGE MATERIALS AND DEVICES	21
ATTACHMENT VOLUMES MEASUREMENT TABLE	22
TYPE CERTIFICATION	25
DECLARATION OF CONFORMITY	27

For additional information and technical assistance, contact the toll-free number
(from Monday to Friday 8:00 - 12:00 / 13:00 - 17:00)



Note: Assytech Srl, complying with its qualitative commitment, reserves the right to change or modify its production and the information in this manual. This catalogue or any portion hereof may not be reproduced without permission.

INTRODUCTION

Directive EURO 4 and EURO 5

On 1st October, 2006, the EURO 4 directive came into force, regulating the limits of exhaust gas emissions for vehicles heavier than 3.5 tons. EURO 5 directive came into force on 1st January, 2008.

From this date, all newly registered lorries and buses shall comply with the new provisions.

EURO 4 directive aims for a reduction of fine particles and No_x (nitrogen oxides), noxious for the environment and for the health.

EURO 5 directive imposes a further reduction of No_x emissions.

SCR technology

To apply EURO 4 and EURO 5 directives, the manufacturers of diesel-powered heavy vehicles set up the SCR (Selective Catalytic Reduction) technology.

This consists of the installation of a special catalytic converter in which AdBlue[®] is used as reducing agent, to transform the noxious nitrogen oxides (No_x) into steam and nitrogen, being harmless substances for the environment.

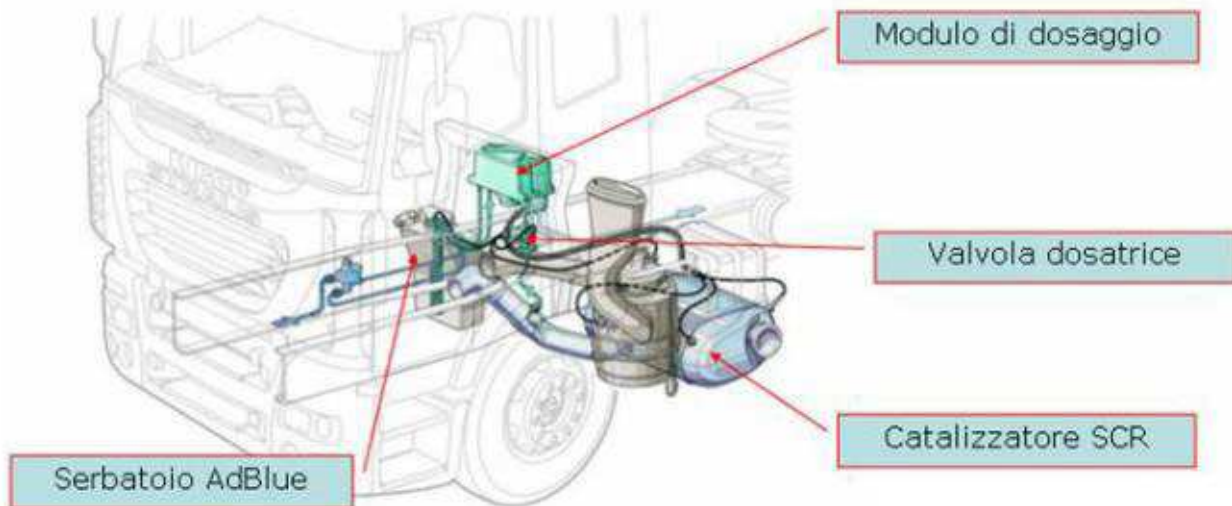
What is AdBlue

AdBlue is a particular solution with very high purity of Urea at 32.5%, whose constant quality is ensured by the compliance to DIN 70070 and ISO 22241:2008 standards.

AdBlue is placed in an auxiliary tank of the vehicle and the quantity used, according to EURO 4 directive, corresponds approximately to 5% of fuel consumption.

Only AdBlue can ensure the correct operation of the catalytic converter.

AdBlue is a harmless substance with crystallization point of -11°C.



DESCRIZIONE

AdBlue TANK DISPENSER are containers equipped for AdBlue storage, with galvanized steel structure coated with pre-painted double wall steel insulated panels.

They are equipped with:

- **High-density linear polyethylene or stainless steel AISI 304 storage tank**
- **Stainless steel AISI 304 delivery pump**
- **Safety solenoid valve**
- **Automatic filling stop device for overflow**
- **Continuous level measurement**
- **Thermal insulation with panels, heating and ventilation**
- **Internal lighting system**
- **Electrical panel complete with protection devices and controls**

Options:

- Leakage containment basin
- Protection rollbar
- Additional heater for temperatures < -10°C
- Product loading fast connection
- Adapter for delivery enabling
- Presetting kit

Note: All components in contact with urea are made with materials included in the recommended materials list (Point 4.1.2 - Table 1, ISO 22241-3: 2008 standard).

SAFETY PRESCRIPTIONS

EMERGENCY PUSHBUTTON AND SWITCH



The following devices shall be installed in all supply stations, manned and unmanned:

- An emergency pushbutton for disconnecting power supply to the whole supply area. The pushbutton shall be easily accessible to operators and, if located in the apron, it shall be protected against accidental intervention.
- An emergency switch for disconnecting power supply to the supply pump and to other electric equipment. The switch shall be easily accessible to service personnel.

RESTRICTIONS



DO NOT SMOKE



DO NOT LUBRICATE, CLEAN, REPAIR OR ADJUST WHEN THE MACHINE IS OPERATING



DO NOT USE OPEN FLAMES



DO NOT REMOVE SAFETY DEVICES

OBLIGATIONS



CHECK THE CORRECT OPERATION OF THE EARTHING, ACCORDING TO APPLICABLE REGULATIONS



DISCONNECT POWER SUPPLY BEFORE WORKING ON THE CONTAINER



EMERGENCY STOP: OPERATE ONLY IN CASE OF REAL EMERGENCY



CHECK FIRE EXTINGUISHER EFFICIENCY AT LEAST EVERY SIX MONTHS

TECHNICAL CHARACTERISTICS

Bearing frame	Hot-dip galvanized steel FE430B		
Walls and cover	Thermally insulated, double wall, pre-painted steel panels, containing a layer of self-extinguishing polyurethane resin foam. Colour: white Thickness: 25 mm		
Handling	Using a forklift, with tank empty		
Tank material	High density linear polyethylene or stainless steel (upon request)		
Tank capability	3000 l	4000 l	5000 l
Dimensions	1,00x3,05H2,35 m	1,24x3,50H2,154 m	1,57x3,50H2,35 m
Weight	600 Kg	700 Kg	750 Kg
Level indicator	Content indication (cm and litres)		
Delivery pump	AISI 304 stainless steel		
Flow rate	40 ÷ 50 l/min		
Power supply	230 VAC monophase		
Maximum current (In)	Max 3 KW		
Pump motor supply	230 VAC 740 W		
Heating (opz.)	230 VAC 1000 W		
Ventilation	230 VAC 60 W		
Electronics	24 VAC 50 W (if present)		
Operating temperature	-10°C ÷ +40°C (-20°C ÷ +60°C upon request)		

Dispenser or dispenser set for sale to third parties, if provided

Refer to the dispenser combined.

CODES

Cod.	Tank capacity	Tank containment	Dispenser	Dispenser type
AT28007	/300: 3000 l /400: 4000 l /500: 5000 l	/V: with tank containment /N: without tank containment	/EA: dispenser or dispenser set not present	/--

VIEWS

WITHOUT DOOR

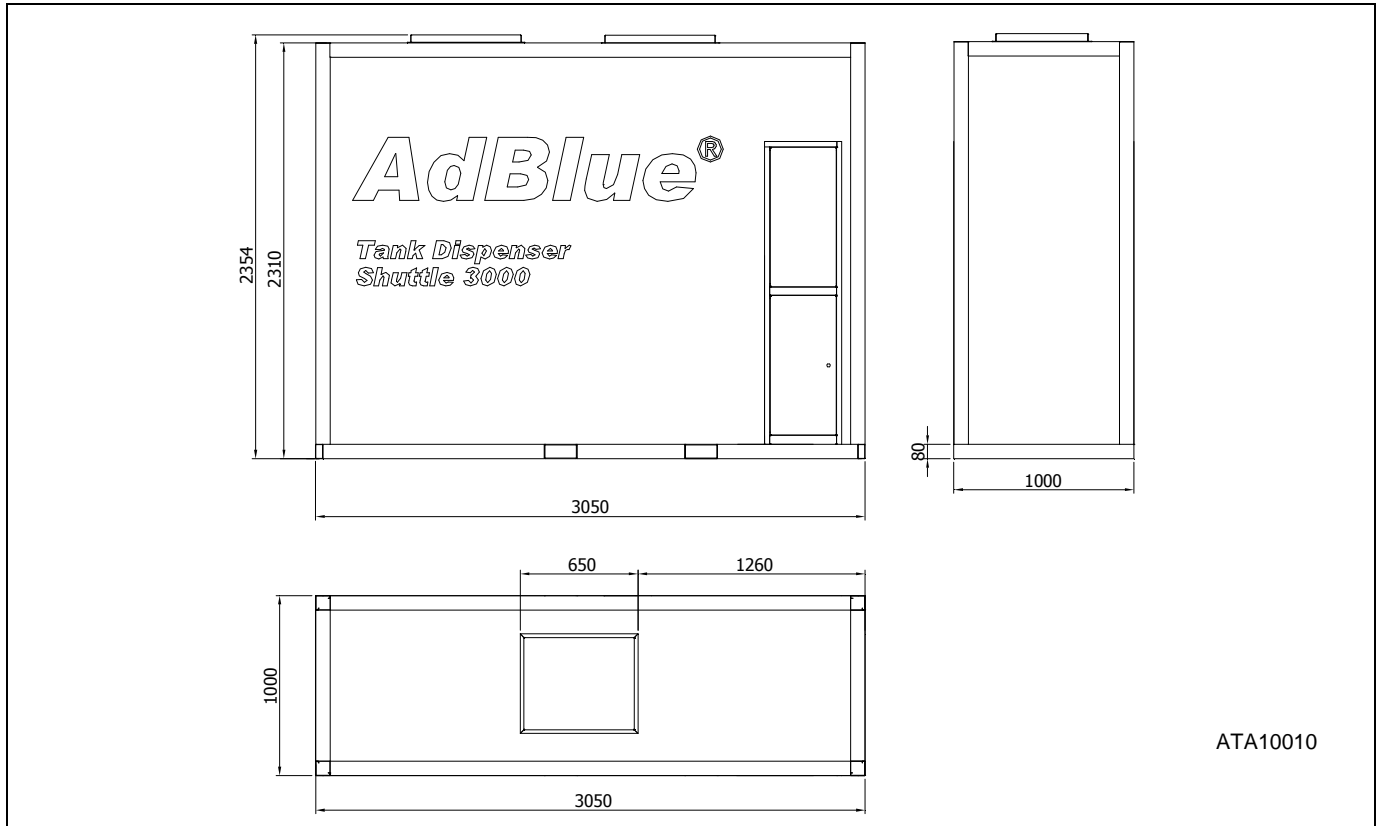


WITH DOOR

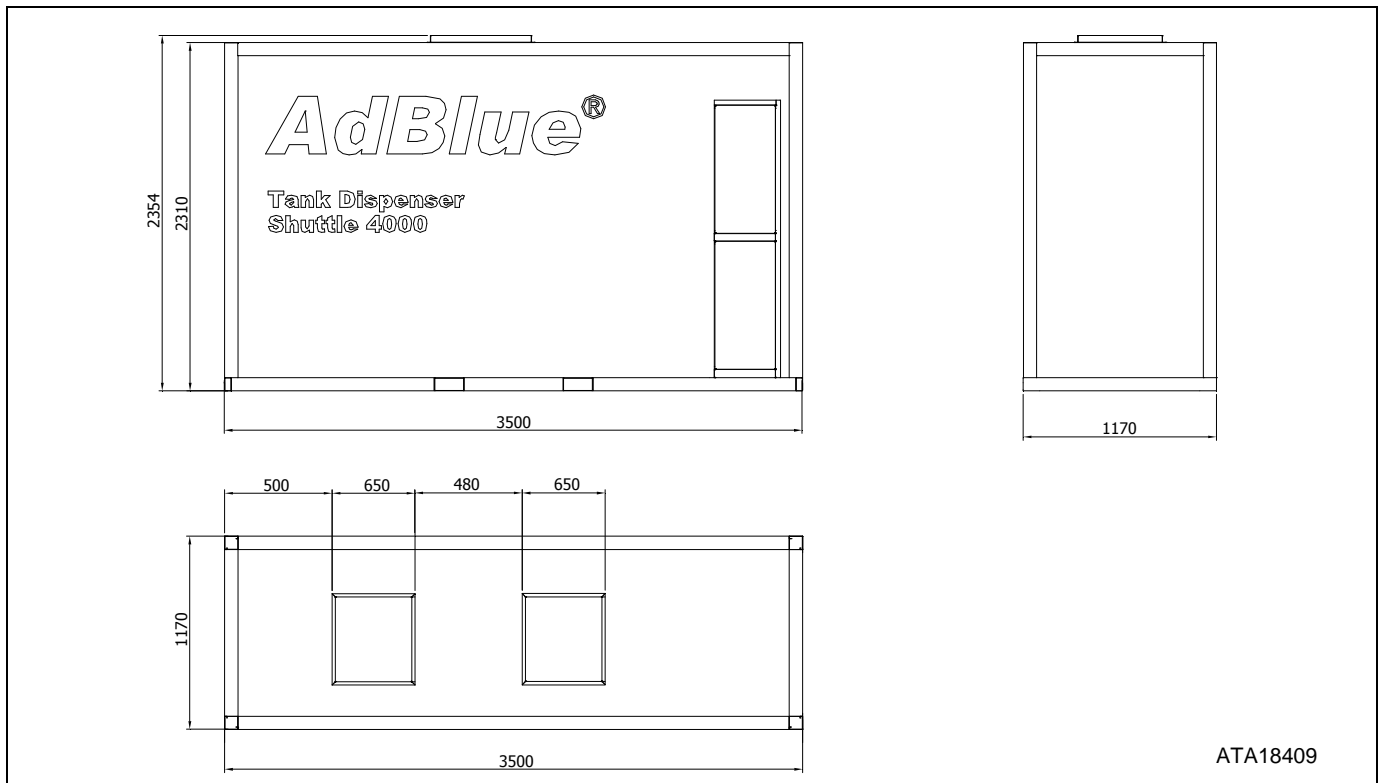


DIMENSIONS

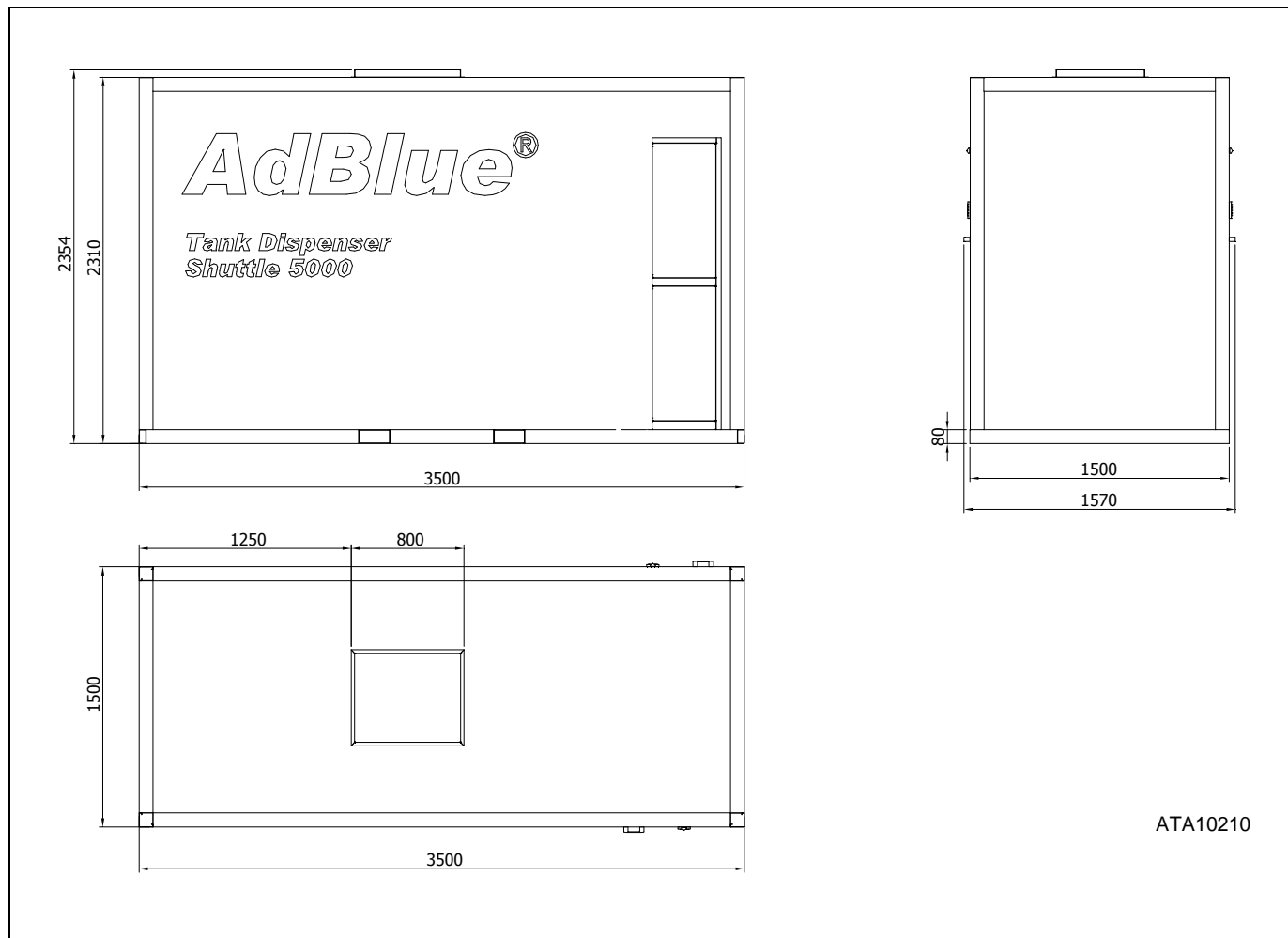
VERSION 3000 L



VERSION 4000 L

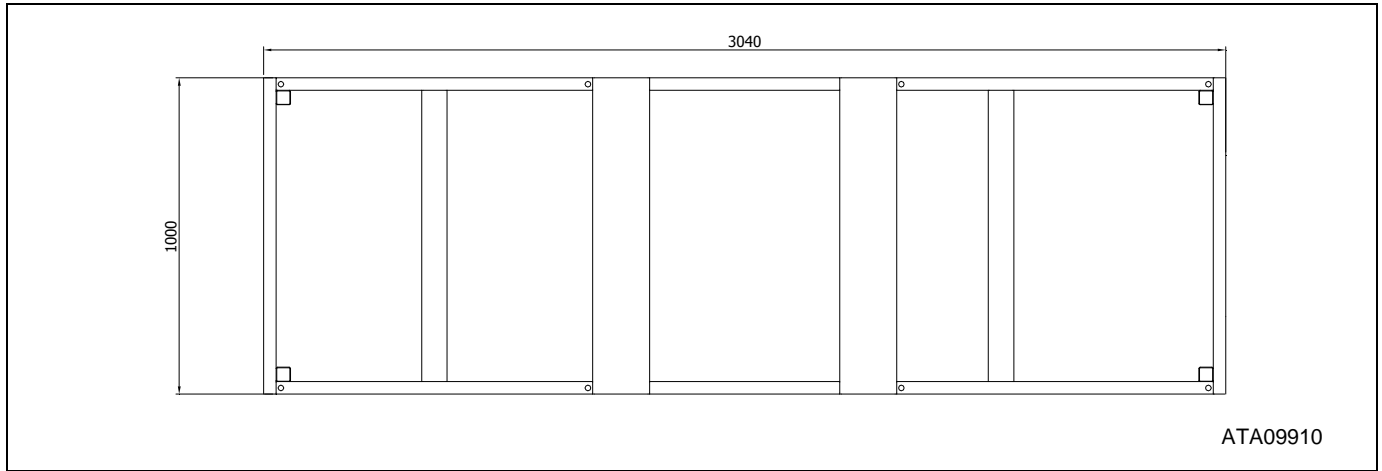


VERSION 5000 L

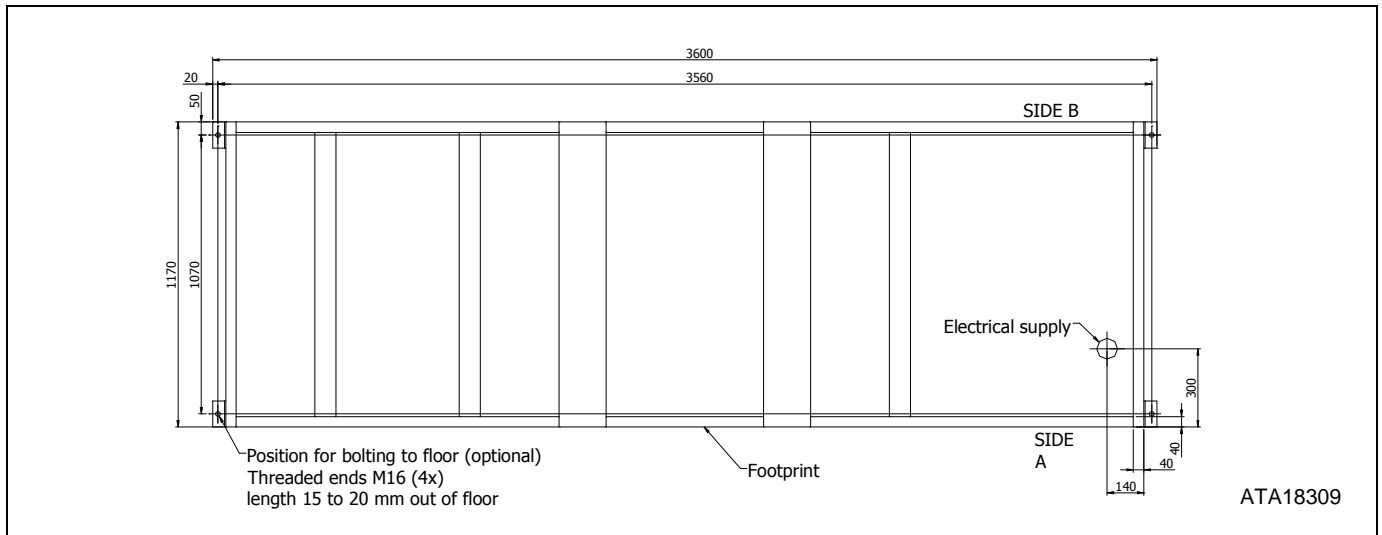


FOUNDATION PLANTS

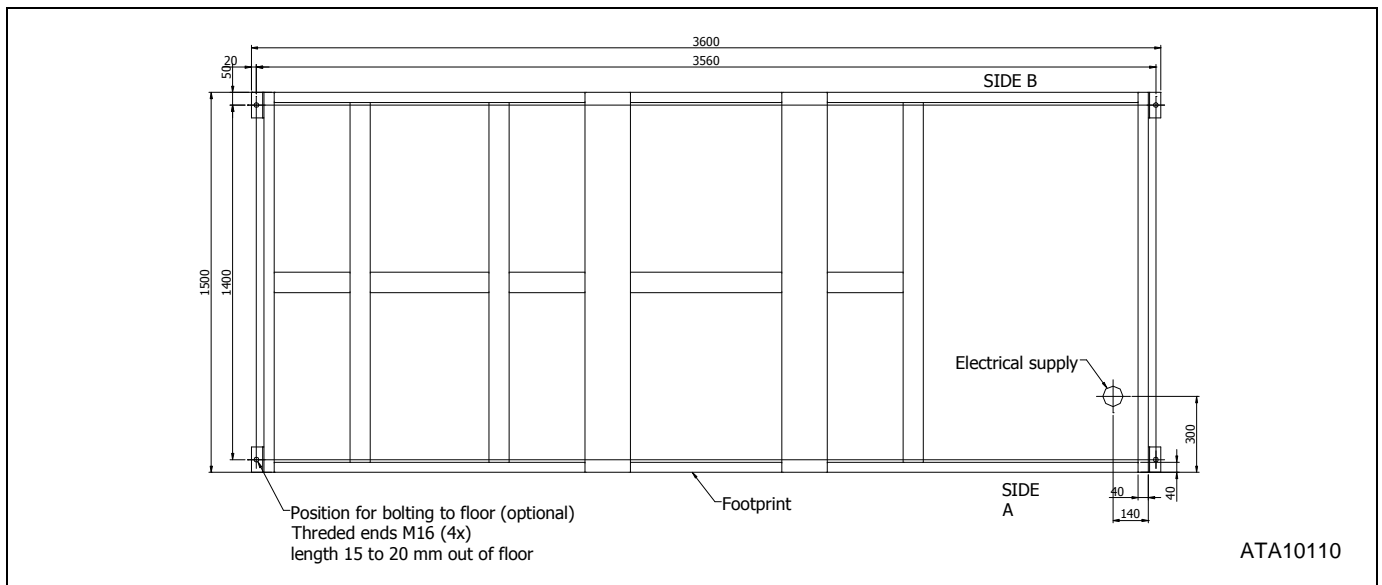
VERSION 3000 L



VERSION 4000 L



VERSION 5000 L



INSTALLATION

- Place the container on a flat surface, with at least a distance of 0.5 metres from surrounding walls.
- Connect a 35 mm² earth cable to the special terminal, as shown in the figure.



EARTH CONNECTION

Level probe installation (if present)

The magnetostriction probe is already wired to the dispenser electronic head, but is supplied outside the tank to avoid that impacts or vibrations could cause damage during transport. The probe shall be inserted into its seat.

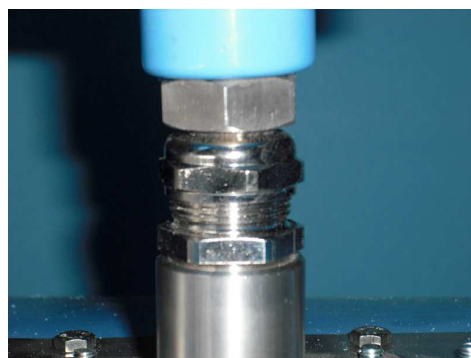
- Open the upper hatch.



- Insert the probe into the tank, through the special entrance, and tighten the mounting bolts.



- Tighten the cable gland.

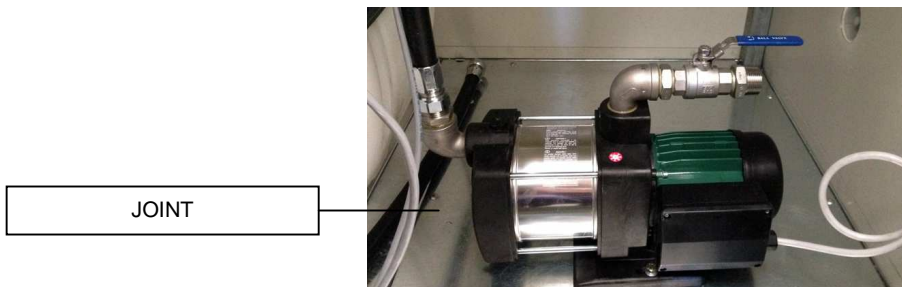
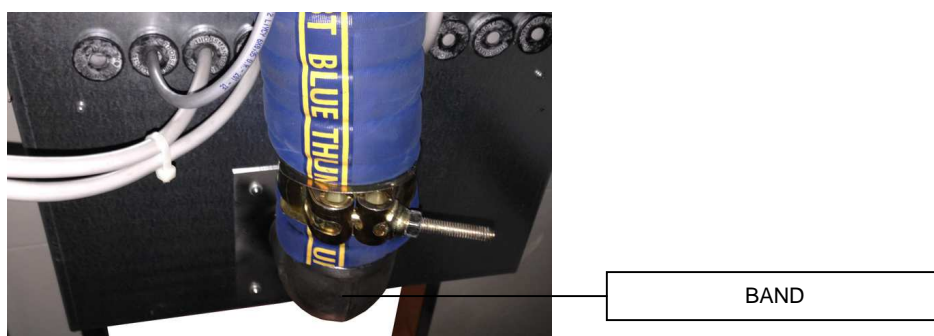


Probe parameters check and adjustment

- Check the level probe parameter settings, as described in the special attachment.

Inspection and tightening of connections

- Transport may cause the loosening of joints and hydraulic seals. After the installation is necessary to carefully check all connections, both those in the line of the tank filling or in the suction line.
- Also the bands of tightness of connections must be checked and tightened if necessary, before filling the tank.



Electrical connection

- The connection of the equipment to the power line is made on the terminal board inside the dispenser. For details, refer to wiring diagram equipment.



Remote control

- The pump is controlled remotely from the dispenser associated to it.
- Lay a screened 4x1 mm² cable between the dispenser and the locking container, as shown in the enclosed diagram.

Refilling

Without quick connection

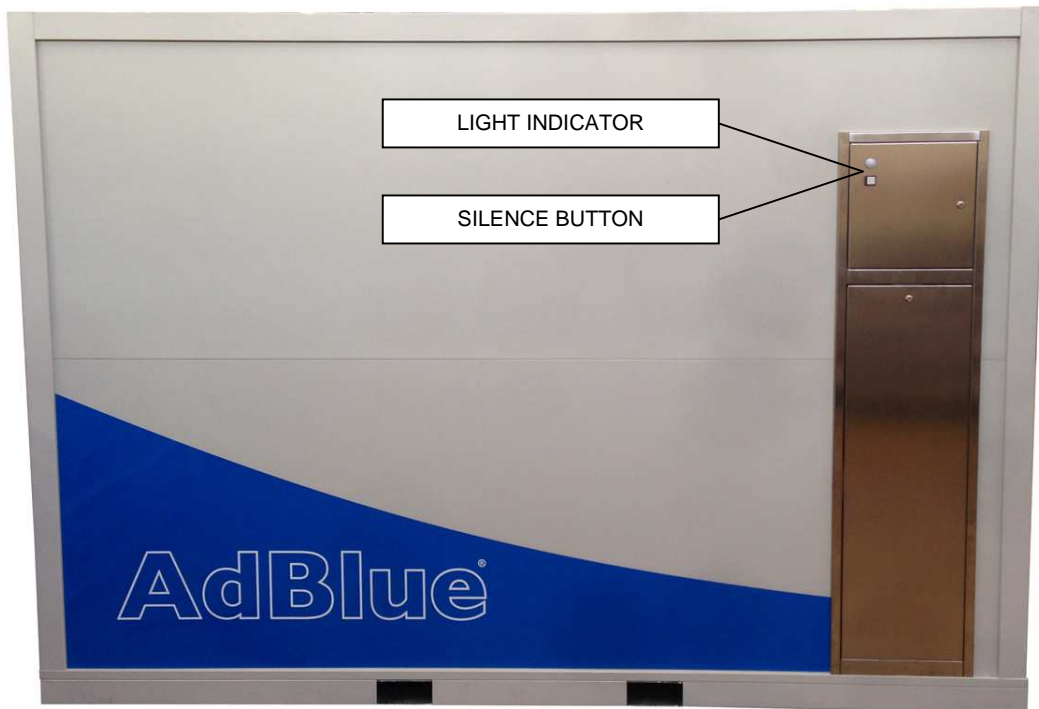
- Leaning against the wall and open the hatch without climbing on the roof.
- Unscrew the tank cap and fill to 90% of maximum volume.

With Quick Connection system

- Connect the quick coupling on the hose of the tank with the connector located in the lower part of the container.
- Unscrew the tank cap and fill to 90% of maximum volume.
- Priming of the suction tank.
- Close the gate valve.
- Unscrew the inlet of the suction hose to the tank and completely fill of product.
- Screw the fitting.
- Open the gate valve.
- Start the pump.
- If within 1 minute the pump fails to prime, check the tightness of the vacuum hoses or the float inside the tank.

OPERATION

The tank dispenser is equipped with an additive storage tank. A level switch coupled to the signaling levels device to code AT14510 allows reporting alarm to maximum, reserve and minimum level, blocking the delivery when necessary.



An indicator light and an acoustic device indicate the availability of the equipment to make product delivery (green) and any alarms (red-green) as described in "Table Report".

Table Report

Event	Light indicator	Acoustic indicator	Delivery
OPERATION OK	GREEN	OFF	ON
OVERFILL	RED-GREEN ON FIXED	ON	ON
RESERVE (WARNING)	RED-GREEN FLASHING	INTERMITTENT	ON
LOW LEVEL	RED-GREEN FLASHING	INTERMITTENT	OFF
LEAKAGE (OPTIONAL)	RED	INTERMITTENT	ON

5 DIGITS LEVEL INDICATOR AND COUNTER ATCH14 SERIES AT02314

DESCRIPTION

This equipment is used for the level measuring of the product stored in a tank, and associated visualisation of level and leakage alarms.



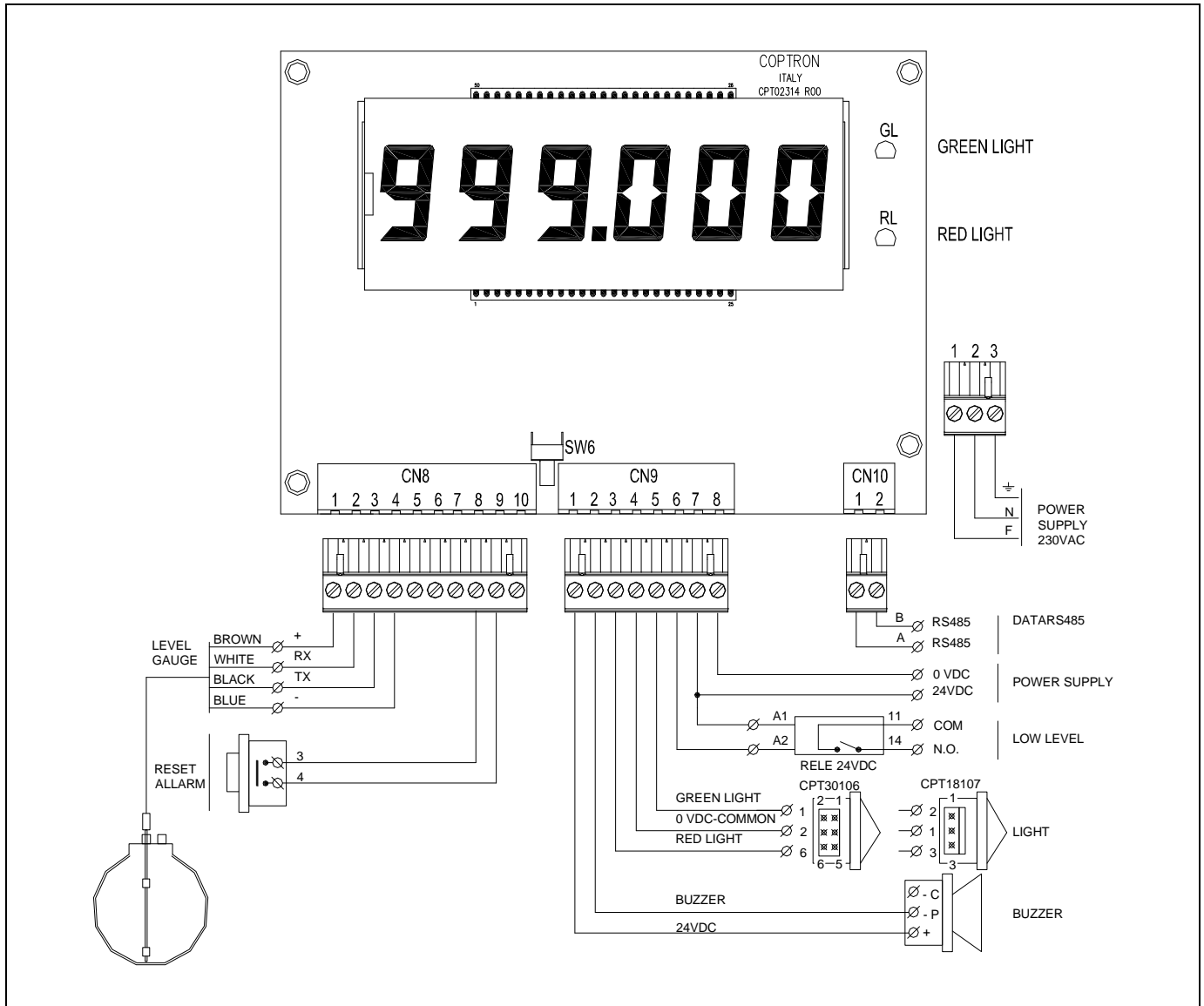
TECHNICAL CHARACTERISTICS

• Power supply	24 VDC
• Consumption	0,050 A
• Pulser power supply	5 VDC
• Pulser input	2 programmable channels
• Auxiliary inputs	2
• Outputs	2
• Display	5 digits LCD - H 1" (25 cm)
• Backlighting system	LED (only types B and C)

Codes

AT02314	/VERSION	/POWER SUPPLY	/HOUSING
	/I: level indicator	/A: 24 VDC	/S: watertight (+ accessories)

ELECTRICAL DRAWING



CONNECTION DESCRIPTION

Specific connectors are present in order to allow the connection of the equipment by using the available inputs and outputs required for the kind of application, as follows.

CN	LEVEL INDICATOR	COUNTER	
CN8	1	+ Level gauge connection	+ Level gauge
	2	RX Level gauge connection	RX Level gauge
	3	TX Level gauge connection	TX Level gauge
	4	- Level gauge connection	- Level gauge
	5	Not used	+ Encoder
	6	Not used	CH B Encoder
	7	Not used	CH A Encoder
	8	Common for Reset alarm and Leak sensor	Common for Nozzle switch and Leak sensor
	9	Reset Alarm input	Nozzle switch input
	10	Leak sensor input	Leak sensor input

CN	LEVEL INDICATOR	COUNTER	
CN9	1	OUT + 24 VDC for Buzzer	OUT + 24 VDC
	2	Buzzer	Pulse output
	3	Green Light	Green Light
	4	OUT + 24 VDC for Signal light	OUT + 24 VDC
	5	Red Light	Presetting solenoid valve output
	6	Low Level allarm Output	Motor start output
	7	+24 VDC In Power Supply	+24 VDC In Power Supply
	8	0 24 VDC In Power Supply	0 24 VDC In Power supply

CN	LEVEL INDICATOR	COUNTER	
CN6	1	A RS485 Data comunication	A RS485 Data comunication
	2	B RS485 Data comunication	B RS485 Data comunication

SW	LEVEL INDICATOR	COUNTER	
SW6	-	Setting switch	Setting switch

FUNCTIONNING

The equipment does not require any special programming.

In the case of use as a level indicator, the level in liters is automatically displayed (liters + with two decimals), alternated with the product temperature (°C) with one or more error codes, if any.

In case of exceeding the minimum allowable level (10% of the product) the concerning error is indicated on the display, the lighting of the red light is activated as well as the relay of the low level signal for the dispenser.

Finally, if you fill the fuel tank above the permitted level, in addition to the error code the alarm lamp is turned on as well as an audible alarm (buzzer) is activated to alert the operator to terminate the operation of supply; This can be silenced by pressing the button Reset.

Attention if is exceeded the maximum refueling threshold, is activated a mechanical device that reduces to 90% the opening of the filling pipe of the tank

Error codes

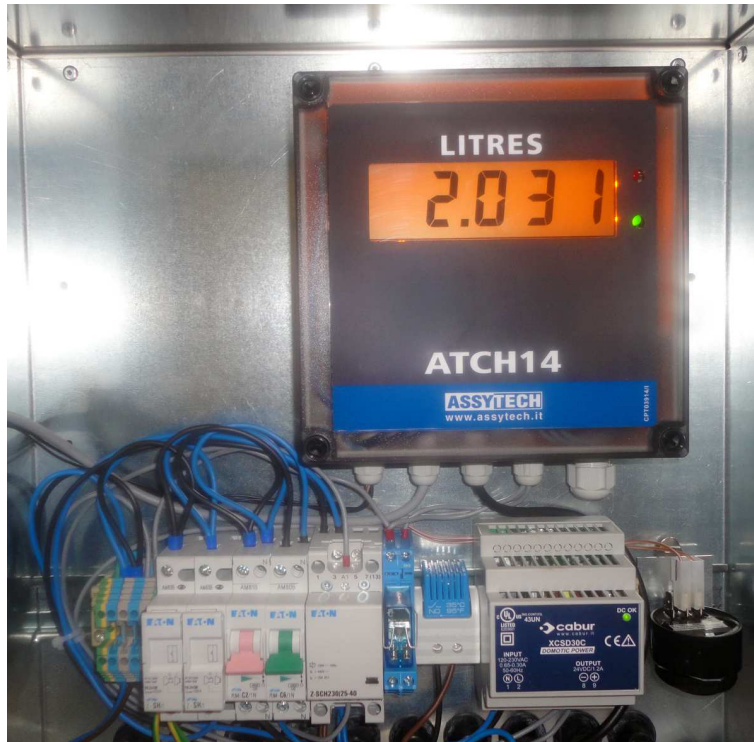
In the case of reserves and low level of product, the corresponding error message are displayed.

Also, if during the product loading the maximum level allowed is exceeded, an acoustic signal (buzzer) is activated. The buzzer can be silenced by pressing the alarm reset.

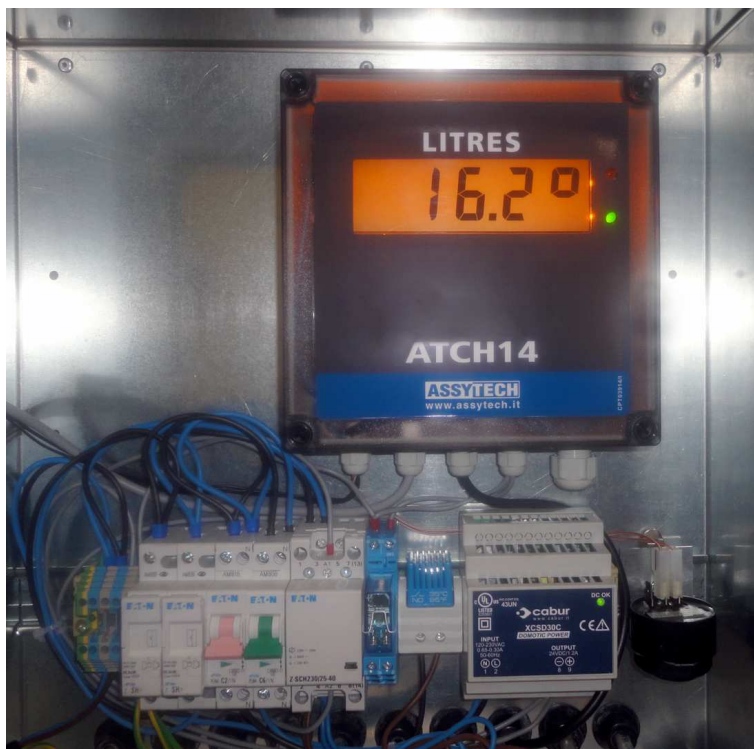
Below are the main error codes highlighted.

Code	Description
"U.Prod"	MINIMUM ALARM LEVEL PRODUCT (10% OF PRODUCT) RELAY ACTIVATION FOR DISPENSER LOCK
"L.Prod"	Minimum product level warning (20% of product)
"H.Prod"	High level product alarm (90% of product) Buzzer activation
"E 00"	Defective probe Error
"-----"	Probe connection error

Level visualisation



Temperature visualisation



Led and reset push button



Relays, Power supply and Buzzer

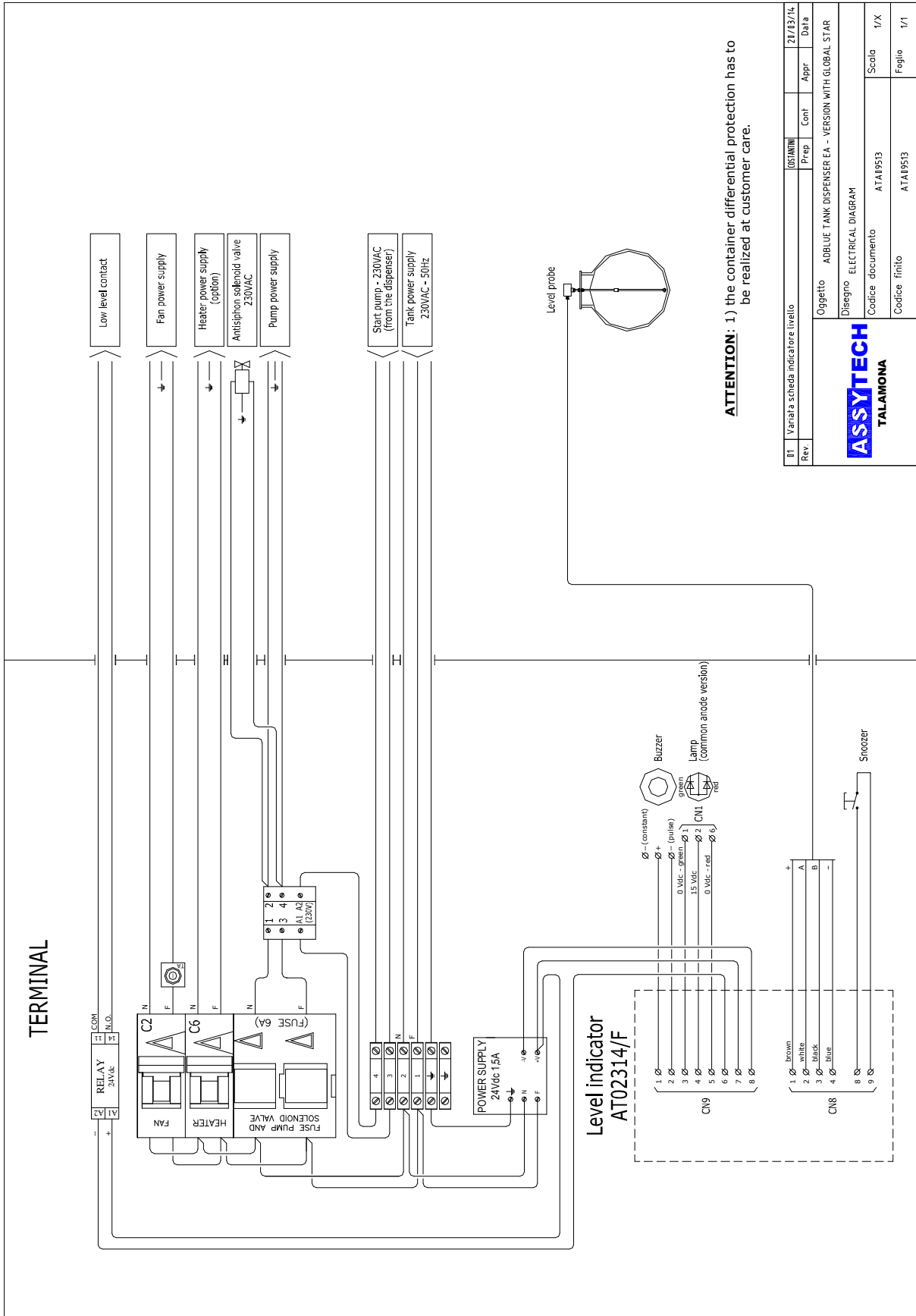


Relay

Power supply

Buzzer

ELECTRICAL DIAGRAM (WITH GLOBAL STAR)

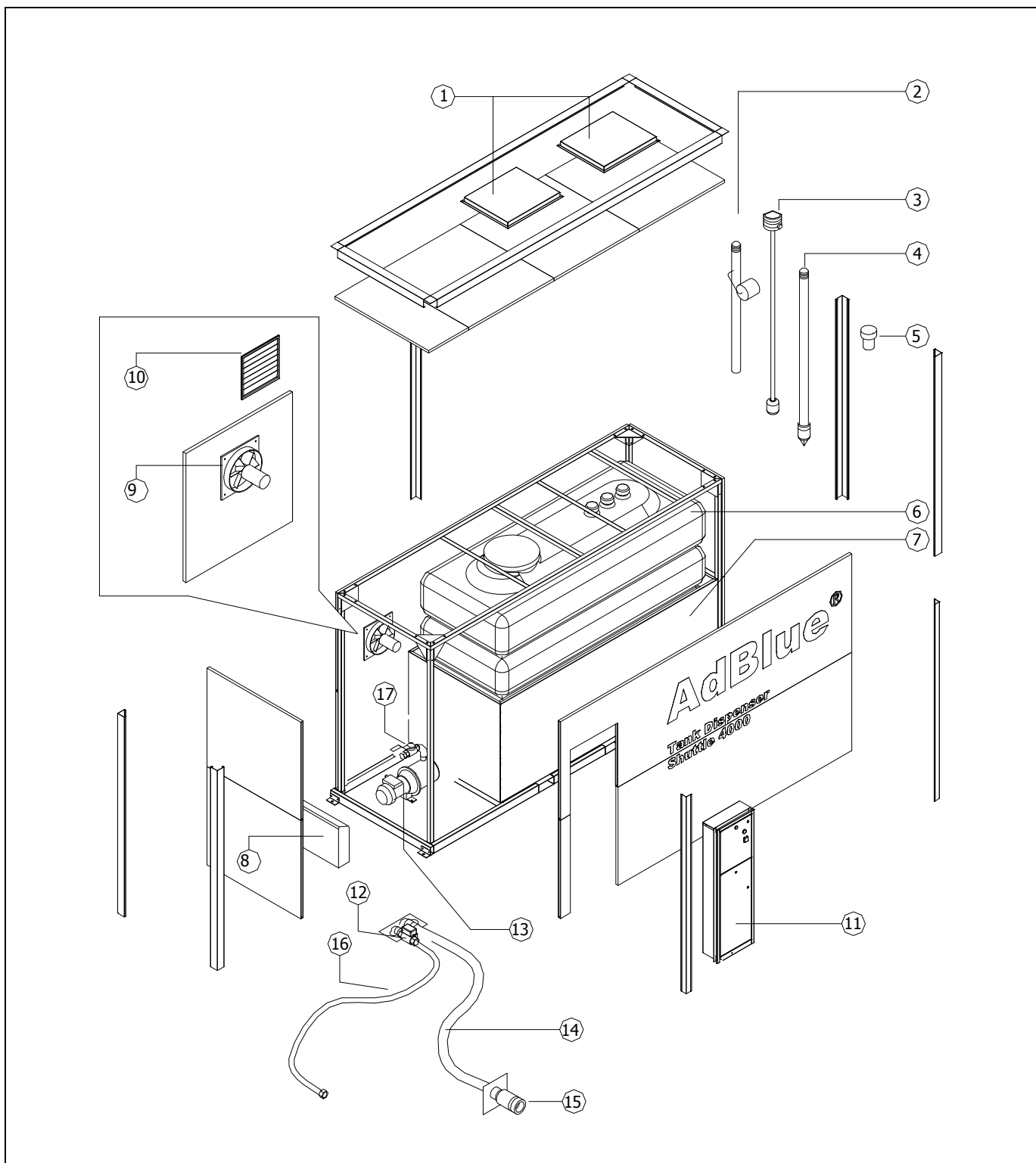


Rev.	01	Variazione scheda indicatore livello	01/21/14	Cont.	Appr.	Data
<p>ASSYTECH TALAMONA</p>						
<p>Oggetto: ADBLUE TANK DISPENSER EA - VERSION WITH GLOBAL STAR</p>						
<p>Disegno: ELECTRICAL DIAGRAM</p>						
<p>Codice documento: ATAP953</p>						
<p>Codice finito: ATAP953</p>						
						Scala: 1/X
						Foglio: 1/1

ACCESSORIES

AT12406	2" fast connection for tank hose direct insertion
ATE02610	Additional heater

SPARE PARTS



Components list AdBlue tank dispenser series AT28007/EA

Rif.	/3000	/4000	/5000	Description
1	ATL07107	ATL07107	ATL07107	MANHOLE CAP
2	AT38206	AT38206	AT38206	OVERFILL VALVE
3	AT05310/A/XXXX	AT05310/A/XXXX	AT05310/A/XXXX	LEVEL GAUGE FOR ADBLUE
4	ATE02310	ATE02310	ATE02310	PIPE WITH SUCTION VALVE
5	ATE05008	ATE05008	ATE05008	PRESSURE VACUUM VALVE
6	ATE02010/3	ATE02010/4	ATE02010/5	ADBLUE TANK
7	ATE08009/3	ATE08009/4	ATE08009/5	CONTAINMENT BASIN
8	ATE02610/1	ATE02610/1	ATE02610/1	HEATER HEATING 1 KW
9	ATE15410	ATE15410	ATE15410	VENTILATION
10	ATE15710	ATE15710	ATE15710	SHUTTER FAN
11	ATE16210	ATE16210	ATE16210	DELIVERY ELECTRICAL PANEL
12	ATE06711/230	ATE06711/230	ATE06711/230	ADBLUE SOLENOID VALVE3/4"- 230 V ANTISIPHON DIRECT CONTROL (OPTIONAL)
13	ATE00112	ATE00112	ATE00112	230V 50HZ ADBLUE PUMP
14	AT01610	AT01610	AT01610	INLET HOSE KIT
15	AT12406	AT12406	AT12406	"TODO" FITTING FOR ADBLUE
16	ATE02210/3	ATE02210/4	ATE02210/5	SUCTION HOUSE
17	ATE05308	ATE05308	ATE05308	GATE CUTTING
-	AT02314/I/A/S	AT02314/I/A/S	AT02314/I/A/S	ATCH14 LEVEL INDICATOR

LIST OF DELIVERY AND STORAGE MATERIALS AND DEVICES



Tank

- Material: non-toxic, high-density, linear polyethylene



Rigid piping and fittings

- Material : AISI 304 stainless steel



Hoses

- Material: FLUORline EFL 16

Suction pump

- Pump body: AISI 304 stainless steel
- Diffuser, nozzle and Venturi: GE Noryl (PPE) GFN2
- Impeller: AISI 304 stainless steel
- Pump shaft: AISI 316 stainless steel
- Mechanical seal: carbon-ceramic

Anti-seepage block solenoid valve

- Body: Aluminium, nickel plated surface
- Internal parts: AISI 304 stainless steel
- Gasket: neoprene (CR)

Industrial meter

- Sensor body: Stainless Steel
- Seals: Buna N (NBR)

Magnetic meter for sale to third parties

- Sensor body: AISI 316 stainless steel
- Internal coating: ceramic
- Electrodes: platinum

Delivery hose

- Internal coating: Buna N (NBR), black
- Covering: neoprene (CR), black
- Fittings: Stainless Steel

ATTACHMENT _ VOLUMES MEASUREMENT TABLE

Comparative table for progressive volumes of 3000 l vertical cylindrical tank

cm	litres	cm	litres	cm	litres	cm	litres	cm	litres	cm	litres	cm	litres
0	0	27	461	54	947	81	1430	108	1914	135	2404	162	2911
1	2	28	476	55	965	82	1449	109	1933	136	2422	163	2928
2	7	29	490	56	985	83	1467	110	1951	137	2441	164	2945
3	15	30	506	57	1004	84	1487	111	1969	138	2461	165	2962
4	26	31	520	58	1021	85	1506	112	1989	139	2479	166	2979
5	41	32	536	59	1037	86	1524	113	2008	140	2499	167	2995
6	59	33	553	60	1053	87	1543	114	2027	141	2518	168	3010
7	80	34	572	61	1067	88	1563	115	2046	142	2537	169	3026
8	105	35	590	62	1082	89	1581	116	2066	143	2556	170	3041
9	133	36	608	63	1098	90	1600	117	2085	144	2576	171	3056
10	164	37	627	64	1113	91	1619	118	2103	145	2595	172	3070
11	165	38	645	65	1129	92	1638	119	2122	146	2613	173	3082
12	184	39	665	66	1147	93	1656	120	2142	147	2632	174	3094
13	202	40	683	67	1165	94	1670	121	2160	148	2652	175	3104
14	220	41	703	68	1183	95	1685	122	2180	149	2671	176	3113
15	239	42	722	69	1203	96	1701	123	2199	150	2690	177	3122
16	257	43	740	70	1222	97	1716	124	2219	151	2709	178	3131
17	275	44	760	71	1241	98	1732	125	2237	152	2729	179	3139
18	295	45	779	72	1260	99	1747	126	2255	153	2747	180	3148
19	314	46	797	73	1279	100	1764	127	2275	154	2765	181	3156
20	332	47	815	74	1298	101	1782	128	2294	155	2785	182	3164
21	351	48	834	75	1317	102	1799	129	2310	156	2804	183	3172
22	370	49	854	76	1335	103	1819	130	2325	157	2822	184	3180
23	389	50	872	77	1354	104	1838	131	2340	158	2840	185	3187
24	407	51	890	78	1374	105	1856	132	2355	159	2857		
25	427	52	910	79	1392	106	1876	133	2371	160	2875		
26	445	53	929	80	1411	107	1894	134	2387	161	2894		

8 cm = low level
 30 cm = Reserve indication
 150 cm = high level

Comparative table for progressive volumes of 4000 l vertical cylindrical tank

cm	litres	cm	litres	cm	litres	cm	litres	cm	litres	cm	litres	cm	litres
0	0	27	586	54	1199	81	1790	108	2380	135	2995	162	3593
1	2	28	606	55	1220	82	1815	109	2405	136	3014	163	3613
2	8	29	626	56	1240	83	1837	110	2428	137	3033	164	3633
3	17	30	646	57	1258	84	1862	111	2451	138	3053	165	3654
4	31	31	667	58	1278	85	1885	112	2474	139	3075	166	3673
5	49	32	689	59	1296	86	1908	113	2498	140	3097	167	3690
6	70	33	711	60	1317	87	1931	114	2521	141	3119	168	3707
7	95	34	733	61	1337	88	1953	115	2545	142	3142	169	3722
8	124	35	756	62	1355	89	1975	116	2567	143	3164	170	3736
9	157	36	780	63	1375	90	1997	117	2591	144	3188	171	3748
10	194	37	803	64	1397	91	2019	118	2614	145	3211	172	3760
11	235	38	827	65	1419	92	2037	119	2638	146	3235	173	3771
12	255	39	851	66	1441	93	2057	120	2661	147	3257	174	3781
13	278	40	874	67	1463	94	2076	121	2685	148	3280	175	3790
14	302	41	896	68	1487	95	2096	122	2709	149	3302	176	3803
15	325	42	920	69	1510	96	2116	123	2732	150	3326		
16	349	43	943	70	1534	97	2136	124	2756	151	3349		
17	371	44	967	71	1557	98	2154	125	2779	152	3371		
18	395	45	991	72	1581	99	2175	126	2803	153	3393		
19	418	46	1014	73	1603	100	2198	127	2825	154	3417		
20	442	47	1036	74	1627	101	2220	128	2849	155	3440		
21	464	48	1061	75	1650	102	2242	129	2872	156	3460		
22	487	49	1084	76	1674	103	2265	130	2894	157	3485		
23	507	50	1107	77	1697	104	2289	131	2917	158	3507		
24	527	51	1130	78	1721	105	2311	132	2935	159	3528		
25	548	52	1154	79	1744	106	2335	133	2955	160	3549		
26	566	53	1176	80	1768	107	2358	134	2975	161	3572		

8 cm = low level
 30 cm = reserve
 160 cm = high level

Comparative table for progressive volumes of 5000 l vertical cylindrical tank

cm	litres	cm	litres	cm	litres	cm	litres	cm	litres	cm	litres	cm	litres
0	0	26	695	52	1422	78	2179	104	2915	130	3682	156	4457
1	4	27	721	53	1453	79	2209	105	2945	131	3713	157	4486
2	16	28	747	54	1484	80	2238	106	2976	132	3744	158	4514
3	36	29	774	55	1516	81	2268	107	3006	133	3775	159	4543
4	64	30	800	56	1548	82	2297	108	3038	134	3806	160	4571
5	100	31	827	57	1581	83	2326	109	3069	135	3835	161	4600
6	124	32	854	58	1610	84	2356	110	3100	136	3865	162	4626
7	155	33	881	59	1636	85	2385	111	3127	137	3894	163	4653
8	185	34	908	60	1662	86	2414	112	3154	138	3924	164	4679
9	215	35	936	61	1687	87	2443	113	3181	139	3955	165	4705
10	245	36	964	62	1714	88	2471	114	3209	140	3985	166	4732
11	276	37	992	63	1741	89	2500	115	3237	141	4015	167	4759
12	306	38	1019	64	1768	90	2527	116	3266	142	4045	168	4786
13	335	39	1046	65	1795	91	2554	117	3294	143	4076	169	4813
14	365	40	1073	66	1821	92	2581	118	3331	144	4106	170	4838
15	394	41	1100	67	1847	93	2608	119	3369	145	4136	171	4863
16	422	42	1131	68	1874	94	2634	120	3405	146	4167	172	4888
17	450	43	1163	69	1900	95	2661	121	3432	147	4197	173	4910
18	478	44	1194	70	1933	96	2687	122	3459	148	4227	174	4931
19	506	45	1225	71	1967	97	2713	123	3486	149	4258	175	4952
20	535	46	1256	72	2000	98	2739	124	3514	150	4288	176	4973
21	565	47	1288	73	2030	99	2766	125	3541	151	4317	177	5000
22	594	48	1315	74	2061	100	2792	126	3568	152	4344	178	
23	620	49	1341	75	2091	101	2822	127	3595	153	4372	179	
24	645	50	1367	76	2121	102	2853	128	3624	154	4400	180	
25	670	51	1392	77	2150	103	2884	129	3653	155	4429	181	

<p>8 cm = low level 30 cm = riserve 157 cm = high level</p>

TYPE CERTIFICATION



Mitglied

KESSELINSPEKTORAT
INSPECTION DES CHAUDIÈRES

Richtstrasse 15, CH - 8304 Wallisellen, Tel. 044 877 61 11, Fax 044 877 61 75



Wallisellen, le 17 Avril 2009

Certificat de contrôle SM 99412

Concernant les installations pouvant polluer l'eau (respect des règles de l'art)

Objet:	<u>AdBlue Tank dispenser</u> - Modèles AT09906/*- Compact version 2000 l, 3000 l, 5000 l, 11600 l - Modèles AT28007/*- Shuttle Version 3000 l, 5000 l
Domaine de validité:	Tank dispenser pour AdBlue, solution aqueuse d'urée (à 32.5%) conforme DIN 70070:2005 et ISO 22241-1:2008
Domaine d'utilisation:	Flottes de camions, bus et autres véhicules lourds
Durée de validité	L'attestation de contrôle est valable jusqu'au 16 Avril 2014 et peut être prolongée sur demande par le détenteur
Détenteur de l'attestation:	ASSYTECH Srl Via Val D'Aosta 5, 23018 Talamona (SO) Italy Tel: + 39 0342 615506 Fax: + 39 0342 600098
Fabricant:	ASSYTECH Srl Via Val D'Aosta 5, 23018 Talamona (SO) Italy
Indications	<ul style="list-style-type: none"> - Les dispensers AdBlue doivent être équipés d'un bac de rétention avec système de détection de fuite. - Les dispensers sont à protéger contre les chocs avec les véhicules lourds au moyen de barres de protections disponibles auprès du fabricant Assytech. - La précision des contrôleurs volumétriques de débit de AdBlue n'a pas été contrôlée. Les dispensers sont uniquement destinés au ravitaillement de véhicules appartenant à une flotte de la même organisation (privée ou publique).

ÜSZ_SM 99412.doc

Seite 1 von 2



- Base légale:**
- Loi et ordonnance sur la protection des eaux (LEaux, OEaux)
 - CCE: Coordination Citerne Suisse
Installations pour liquides polluant les eaux
 - * Classeur 1: Directive d'exécution du canton
 - * Classeur 2: Directive d'exécution
 - Notice «Evacuation des eaux des stations-service équipées de carburants contenant de l'éthanol, du biodiesel et de l'urée» disponible auprès des service de l'environnement des cantons.
- Base technique:**
- DIN 70070:2005 Moteurs diesels
 - Agents AUS 32 de réduction NOx- Exigences de qualité
 - ISO 22241-1:2008: Agent AUS 32. Exigences de qualité
 - ISO 22241-2:2008: Méthodes d'essais
 - ISO 22241-3:2008: Manipulation, transport et stockage
 - ISO 22241-4:2008: Connecteur de remplissage
- Modification:**
- Toute modification ultérieure des dispensers doit être déclarée préalablement pour accord auprès de l'ASIT.
- Une copie du dossier technique est disponible auprès de l'ASIT
- Rapport de contrôle:**
- Ce certificat de contrôle est basée sur le rapport de contrôle SM 99412, daté du 17 Avril 2009.
- Rédacteur: Dr. Patrick Weber

ASIT Inspection des chaudières, groupe construction

8 Mai 2009

Dr. Patrick Weber

Responsable du groupe construction

Markus Staub

Inspecteur



ASSEMBLAGGI ELETTROMECCANICI

Factory and sales office
Via Val D'Aosta 169
23018 Talamona (SO) Italy
Tel. +39 0342-615506

Declaration of conformity

for AdBlue storage system

Equipment description

The AdBlue storage system is a system to be installed on fixed supply systems for private vehicular supply use.

The Company **Assytech S.r.l.**, with head office in via Val D'Aosta 169, Talamona, Italy, under its own responsibility,

DECLARES

That the AdBlue storage system manufactured by it

Serial number	
Year of manufacture	

COMPLIES

with provisions stated by following EC Directives and relevant amendments, as well as national regulations:

- Machinery directive: 2006/42/EC
- EMC directive: 2004/108/EC
- LVD Directive: 2006/95/EC
- Electric nature requirements: EN 60204-1
- Mechanical nature requirements: EN 12100-1:2003 and EN 12100-2:2003
- AdBlue equipment requirements: ISO 22241-3:2008

Stamp and signature
The legal representative

Place and date of issue

Talamona

ASSYTECH s.r.l.
Via Val d'Aosta, 169 - 23018 TALAMONA (SO)
Tel. 0342 615506 - Fax 0342 600098
E-mail: info@assytech.it
C.F. e P.IVA: 00718620145
Legale Rappresentante: *Motti Edoardo*