

NEWCO Gate, Globe, and Check Valves

Complete line of cast, forged, and stainless steel valves
in a full range of sizes and classes

Cast Stainless Steel Valves

Cast stainless steel NEWCO* gate, globe, and check valves exceed all industry design requirements. These valves range from 2 to 54 in [50 to 1,350 mm] in pressure classes 150 to 1500.

Gate valves

- 2 to 54 in [50 to 1,350 mm]
- Classes 150 to 1500
- API Spec 600 design
- Raised-face (RF), ring-type-joint (RTJ), and butt-weld (BW) ends
- Flex wedge style
- Wrought carbon (WCB), low-temperature wrought carbon (LCC), and alloy-grade material

Cast steel gate valves are ideal for bidirectional flow and tight shutoff. Because of the flow characteristics of the wedge-to-seat design, gate valves should be operated in the full-open or full-closed position. Concentrated flow across the seats of a partially opened gate valve risks seat damage; therefore, throttling is not recommended. Gate valves are used in applications requiring minimum pressure drop.



Globe valves

- 2 to 24 in [50 to 600 mm]
- Classes 150 to 1500
- API Spec 623 design
- RF, RTJ, and BW ends
- Plug-type disc style
- WCB, LCC, and alloy-grade material

Cast steel globe valves are ideal for unidirectional, controlled flow. The flow characteristics of a globe valve are repeatable, consistent, and easy to control at various open positions, making them ideal for general flow regulation.



Check valves

- 2 to 36 in [50 to 900 mm]
- Classes 150 to 1500
- API Spec 594 design
- RF, RTJ, and BW ends
- Swing and tilting-disc styles
- WCB, LCC, and alloy-grade material

Cast steel check valves minimize restriction to low-velocity environments and are ideal for preventing backflow in unidirectional flow applications in horizontal or upward (vertical) flow. The tilting-disc design reduces slamming.



Forged Steel Valves

Gate valves

- ¼ to 2 in [5 to 50 mm]
- Classes 150 to 4500
- API Spec 602 design
- Flanged, threaded, socket-weld (SW), and BW ends
- A105, LF2, and alloy-grade materials

Forged steel valves are ideal for standard and critical industry applications. The welded bonnet joint eliminates the body-bonnet flanges, reducing weight and simplifying the application of exterior insulation. The welded bonnet ensures containment of the high-pressure applications experienced within the industry. This, in concert with the forged steel body, provides the highest-integrity sealing available.

Forged steel bolted- and welded-bonnet NEWCO valves are ideal for bidirectional flow and tight shutoff. Because of the flow characteristics of the wedge-to-seat design, gate valves should be operated in the full-open or full-closed position. Gate valves are used in applications where minimum pressure drop is desired.



Globe valves

- ¼ to 2 in [5 to 50 mm]
- Classes 150 to 4500
- API Spec 602 design
- Flanged, threaded, SW, and BW ends
- A105, LF2, and alloy-grade materials

Forged steel bolted- and welded-bonnet globe valves are ideal for unidirectional, controlled flow. The flow characteristics of a globe valve are repeatable, consistent, and easy to control at various open positions, which makes the design ideal for general flow regulation. The Y-pattern globe valves offer the same flow capabilities as standard globes but generate less turbulence and lower pressure drops.



Check valves

- ¼ to 2 in [5 to 50 mm]
- Classes 150 to 4500
- API Spec 602 design
- Flanged, threaded, SW, and BW ends
- A105, LF2, and alloy-grade materials

Forged steel bolted and welded bonnet check valves minimize restrictions to low-velocity environments and are ideal for preventing backflow in unidirectional flow applications in horizontal or vertical flow. Piston and ball check valves with springs enable horizontal or vertical installation.



Pressure-Seal Valves

Pressure-seal valves are ideal for standard and critical power industry applications. The pressure-seal bonnet joint eliminates the body-bonnet flanges, reducing weight and simplifying the application of exterior insulation. Contrary to bolted-bonnet valves, internal pressure applied to a pressure-seal valve forces the sealing elements into tighter contact—the higher the internal pressure, the tighter the seal.

The pressure-seal valves in the NEWCO valve portfolio comply with the design and test requirements of ASME Spec B16.34 and Manufacturers Standardization Society of the Valve and Fittings Industry (MSS) SP-144 and the installation dimensions of ANSI Spec B16.10.

Gate valves

- 2 to 24 in [50 to 600 mm]
- Classes 600 to 2500
- ASME Spec B16.34 design
- RF, RTJ, and BW ends
- All material grades

Cast steel pressure-seal gate valves are ideal for bidirectional flow and tight shutoff. Because of the flow characteristics of the wedge-to-seat design, gate valves should be operated in the full-open or full-closed position. Gate valves are used in applications requiring minimum pressure drop.

Globe valves

- 2 to 24 in [50 to 600 mm]
- Classes 600 to 2500
- ASME Spec B16.34 design
- RF, RTJ, and BW ends
- All material grades

Cast steel pressure-seal globe valves are ideal for unidirectional, controlled flow. The flow characteristics of a globe valve are repeatable, consistent, and easy to control at various open positions, which makes the design ideal for general flow regulation.

Y-pattern globe valves

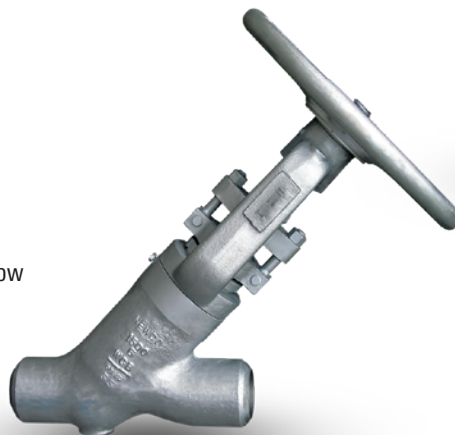
- 2 to 24 in [50 to 600 mm]
- Classes 600 to 2500
- ASME Spec B16.34 design
- RF, RTJ, and BW ends
- All material grades

Cast steel pressure-seal Y-pattern globe valves offer the same flow capabilities as standard globes but generate less turbulence and lower pressure drops.

Tilting-disc and swing check valves

- 2 to 14 in [50 to 350 mm]
- Classes 600 to 2500
- ASME Spec B16.34 design
- RF, RTJ, and BW ends
- All material grades

Cast steel pressure seal tilting-disc and swing check valves minimize restriction to low-velocity environments and are ideal for preventing backflow in unidirectional flow applications in horizontal flow. The tilting-disc design reduces slamming.



Stainless Steel Valves

Gate valves

- ¼ to 24 in [5 to 600 mm]
- Classes 150 to 1500
- ASME Spec B16.34, API Spec 603, and API Spec 602 design
- RF, RTJ, threaded, SW, and BW ends
- 304L, 316L, 317L, 321, 347H, and A20 materials

Stainless steel gate valves have a rising stem, outside stem and yoke (OS&Y), graphite or tetrafluoroethylene (TFE) seals, integral seat rings, and a stem backseat design. Cryogenic designs are also available.

Globe valves

- ¼ to 12 in [5 to 300 mm]
- Classes 150 to 1500
- ASME Spec B16.34, API Spec 603 as applicable, and API Spec 602 design
- RF, RTJ, threaded, SW, and BW ends
- 304L, 316L, 317L, 321, 347H, and A20 materials

Globe valves are designed with OS&Y, a bolted bonnet, plug-type disc, graphite or TFE seals, a rising stem, integral seat, and stainless steel bolting. Cryogenic designs are also available.

Check valves

- ½ to 12 in [15 to 300 mm]
- Classes 150 to 1500
- ASME Spec B16.34, API Spec 603 as applicable, and API Spec 602 design
- RF, RTJ, threaded, SW, and BW ends
- 304L, 316L, 317L, 321, 347H, and A20 materials

Swing-type check valves are designed with graphite or TFE seals, a bolted cover, an integral seat, and stainless steel bolting. Piston and ball check valves are available in 2-in and smaller configurations.



Specifications

Floating ball valves meet or exceed industry standard requirements and are fire safe.

Basic design	ASME Spec B16.34
Flange surface finish	125 to 250 arithmetic average roughness height (AARH)
Serrated	
Face-to-face dimension	ASME Spec B16.10
Flanged end dimension	ASME Spec B16.5
Inspection and testing	API Specs 598 and 607
Certifications	ISO 9001, CRN, [†] and PED [‡]
[†] Canadian Registration Number	
[‡] Pressure Equipment Directive	

Advantages

- ASME classes 150, 300, and 600
- Standard NACE MR0103 compliance
- WCB, LCC, and CF8M body material
- ISO actuator mounting pad
- Full port or reduced port
- ½- to 12-in [15- to 300-mm] size range
- Fire testing to API Spec 607 Rev. 4
- Adjustable stem packing
- Blowout-proof stem
- Locking device
- Antistatic ground
- Stainless steel trim
- Two-piece body design
- Reinforced PTFE seats



Cameron NEWCO valves are designed and manufactured to meet the current editions of industry standards and have been production tested to written procedures that include the requirements of API Spec 598, ASME Spec B16.34, and MSS SP-61. Cameron offers the GreenSeal packing system for service applications to guarantee the customer's valve is packed for low fugitive emissions. Testing indicated that cast steel gate valves with a standard body-bonnet joint gasket did not release contents to the atmosphere. The addition of our GreenSeal packing system completes our leak-proof packing solution.

NEWCO valves, properly installed and adjusted, will provide a fugitive emission seal at both the body-bonnet and stem packing. Routine stem seal maintenance will maintain performance for many cycles. This results in a reduction in the cost of ownership.



GreenSeal low-emissions packing technology.

Services for Valves and Actuation

Global network and local support

Cameron is well positioned to quickly and efficiently deliver total aftermarket support with unmatched OEM expertise. Our highly skilled engineers and technicians are available around the clock to respond to customer queries, troubleshoot problems, and offer reliable solutions.

Easily accessible parts and spare valves

- OEM spare valves, actuators, and parts (including non-Cameron brands)
- Handling, storage, packaging, and delivery
- Dedicated stocking program

Comprehensive services portfolio

- Parts and spare valves
- Repair
- Field services
- Preventative maintenance
- Equipment testing and diagnostics
- Remanufacturing
- Asset preservation
- Customer property management
- Training and recertification services
- Warranty

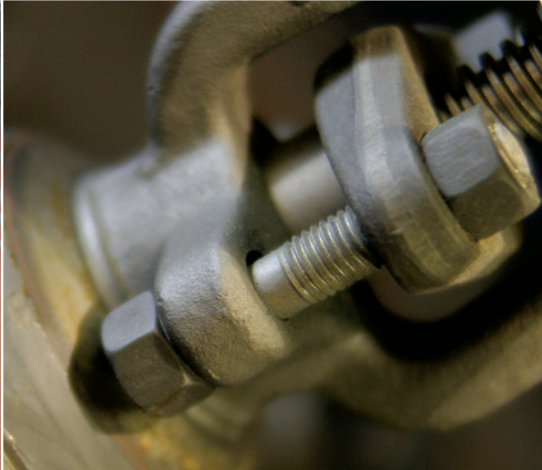
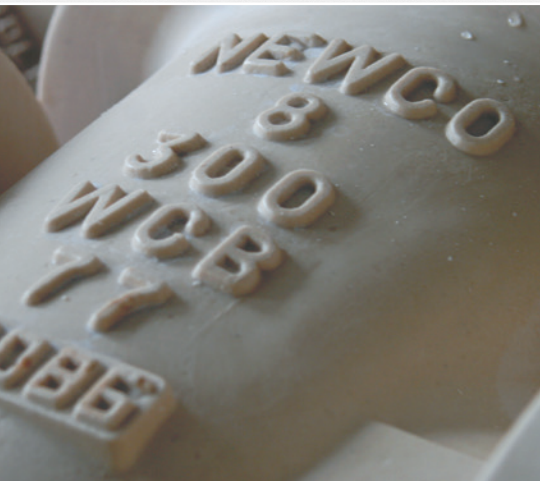
Customized total valve care programs

Our customized asset management plans optimize uptime, availability, and dedicated services.

- Engineering consultancy
- Site management
- Flange management
- Startup and commissioning
- Spare parts and asset management
- Operational support



NEWCO Gate, Globe, and Check Valves



products.slb.com/newco

*Mark of Schlumberger
Other company, product, and service names
are the properties of their respective owners.
Copyright © 2018 Schlumberger. All rights reserved. 18-VL-380086

